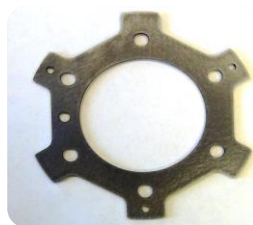
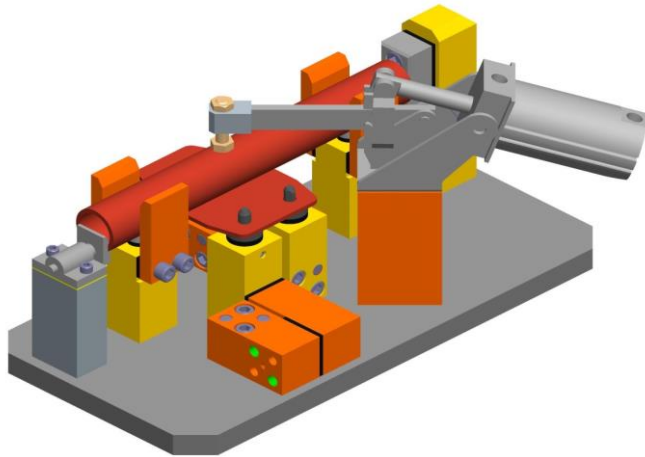
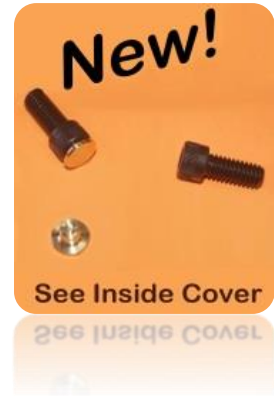


RAPid Tooling Components™

Shims, Blocks, Plates, Risers, and Caps



Die - Shims



RENTAPEN LLC.
Weld Fixture Specialists
(262) 395-4699
www.rentapen.com

For updated components and product information please visit
www.rentapen.com and click Order 3D Models

Authorized Distributor or Represented By:



Introducing:

RAPid Tooling Components™ RAPid Caps!

**Protect Socket Head Cap Screws
from Weld Spatter!**



Below are the standard sizes.
If your size is not listed, we can
still make it!

Inch Screw Sizes	Metric Screw Sizes
.500	M6
.375	M8
.313	M10
.250	M12

Part Numbers are easy:
RC00-500 for the 1/2" screw
RC00-M6 for the M6 screw

Made in USA

RAPid Caps are easy to press in the socket,
and designed to make it easy to pop the cap
off with a simple screw driver.

Plan for those times when changes need to
be made to your weld fixture or machine tool.

Keep your fasteners weld-spatter and dirt free
with RAPid caps.

Made of Brass



For more information visit:

www.rentapen.com

Click - RAPid Tooling Components
Click - RAPid Caps



RENTAPEN LLC.

RAPid Tooling Components (RTC)

Table of Contents

Page	Description	Page	Description
1-1	General Information	1-4	RAPid Tooling Components sample usage
1-2	RAPid Tooling Components sample usage	1-5	RAPid Tooling Components sample usage
1-3	RAPid Tooling Components sample usage		

RAPid Blocks

2-1	RAPid Blocks style 00 (8) holes	2-4	RAPid Blocks style 05 (4) holes
2-1	RAPid Blocks style 02 (8) holes	2-5	RAPid Blocks style 11 - up to 3mm shim pack
2-2	RAPid Blocks style 00 (4) holes	2-5	RAPid Blocks style 12 - up to 3mm shim pack
2-2	RAPid Blocks style 02 (4) holes	2-6	RAPid Blocks style 16 - 3mm to 6mm shim pack
2-3	RAPid Blocks style 03 (8) holes	2-6	RAPid Blocks style 19 - 3mm to 6mm shim pack
2-3	RAPid Blocks style 05 (8) holes	2-7	Customized RAPid Tooling Components
2-4	RAPid Blocks style 03 (4) holes		

RAPid Plates

3-1	RAPid Plates style 00	3-2	RAPid Plates style 04
3-1	RAPid Plates style 02	3-3	RAPid Plates style 05
3-2	RAPid Plates style 03		

RAPid Shims

4-1	RAPid Shims that MATCH other shim shapes	4-3	Die Sharpening/Detailing Shims
4-2	RAPid Shims for EXISTING components		

User Defined Shims

4-4	RAPid Shims style 03	4-7	RAPid Shims style 39
4-4	RAPid Shims style 29	4-8	RAPid Shims style 40
4-4	RAPid Shims style 30	4-8	RAPid Shims style 41
4-5	RAPid Shims style 32	4-9	RAPid Shims style 42
4-5	RAPid Shims style 33	4-9	RAPid Shims style 43
4-6	RAPid Shims style 36	4-10	RAPid Shims style 44
4-6	RAPid Shims style 37	4-10	RAPid Shims style 45
4-7	RAPid Shims style 38		

Screw Defined Shims

4-11	RAPid Shims style 05	4-13	RAPid Shims style 17
4-11	RAPid Shims style 06	4-13	RAPid Shims style 23
4-11	RAPid Shims style 07	4-14	RAPid Shims style 24
4-12	RAPid Shims style 13	4-14	RAPid Shims style 25
4-12	RAPid Shims style 14	4-15	RAPid Shims style 26
4-12	RAPid Shims style 15	4-15	RAPid Shims style 27
4-13	RAPid Shims style 16		

Width Defined Shims

4-16	RAPid Shims style 08	4-18	RAPid Shims style 19
4-16	RAPid Shims style 09	4-18	RAPid Shims style 20
4-16	RAPid Shims style 10	4-18	RAPid Shims style 21
4-17	RAPid Shims style 11	4-19	RAPid Shims style 22
4-17	RAPid Shims style 12	4-19	RAPid Shims style 34
4-17	RAPid Shims style 18	4-19	RAPid Shims style 35

RAPid Risers

5-1	RAPid Riser style 00	5-2	RAPid Riser style 00 selection chart
5-1	RAPid Riser style 01	5-3	RAPid Riser style 00 dimensions

RTC Story

6-1	History
-----	---------



General Information

RTC Components

RTC blocks and plates consist of a set of eight screw size offerings with a variety of hole and length combinations. RTC shims are currently available in many predefined shapes, eight different thicknesses and your choice of 1010 full hard or 300 series stainless. RTC components are made to order and delivery will be set at time of order. 2D files and 3D models of these optional components can be created & downloaded from weldfixturecomponents.com. Visit www.rentapen.com for the link to this online CAD catalog.

CUSTOM Components

Rentapen will gladly quote any block, plate or shim. All you need to do is email us a drawing in DXF, PDF, or TIF format or fax a copy to us. For a shim quote, all we need is a 2D shape in DXF format without dimensions or a faxed dimensioned drawing. This is a great way to get your die sharpening shims or custom shims made economically.

Miscellaneous information

Delivery / Production times

Delivery will be set at the time of the purchase order. Rentapen has an excellent record of quality and on-time delivery. Our team works hard to only promise what it can deliver. Sometimes situations can arise that are beyond our control. Rentapen LLC. shall not be held responsible for any delay or failure to make delivery of all or any part of the products due to acts or circumstances beyond the control of Rentapen LLC. including, but not limited to: labor difficulties, fires, casualties, accidents, acts of God, transportation difficulties, inability to obtain material, or governmental regulations or actions.

Shipping

We will prepay and add freight charges to your invoice if you do not supply us with an account to use. Title and risk of loss pass to the customer upon tender of shipment to the carrier. If product is damaged in transit, customer must file claim with the carrier.

Limited Warranty

Rentapen LLC. aims to provide only quality products. If for some reason you have a problem with one of our components, please contact us within 30 days after shipment. We will replace any defective **RAPid Tooling Component** free of charge. In no event shall Rentapen LLC. be liable for special, incidental or consequential damages, including loss of profits.

Return policy

We stand behind our products. Rentapen will accept any defective or incorrectly shipped merchandise at our expense. Components may be returned with a restocking charge of 25%. Return requests must be made within 30 days after shipment with a **Return Material Authorization Number**. Custom RTC Components, shims, etc will be determined on an individual basis.

CAD files

3D models of these components can be created & downloaded from weldfixturecomponents.com. Visit www.rentapen.com for a link to this online CAD catalog.

Engineering changes

Product improvement is a continuous process at Rentapen LLC.

RAPid Tooling Components are continually subject to design improvements. We strive to update our web site and catalog with any engineering changes as soon as possible. However, due to inevitable lag times, dimensions and specifications are subject to change without notice.

Creating the correct number

Metric examples (nearest 0.1mm increments only)

For 5mm use M5

For 100mm use M100

For 55.56mm use M55.6

Inch examples (nearest .001" increments only)

For 11.31" use 11310

For 4.75" use 4750

For .25" use 250

Prices

Contact Rentapen for current pricing. Feel free to visit our web site for authorized distributors and Sales Representatives

Additional catalogs

Contact your local distributor, Sales Representative or download the catalog in PDF format from our web site. Visit our web site for a list of authorized distributors and Sales Representatives.

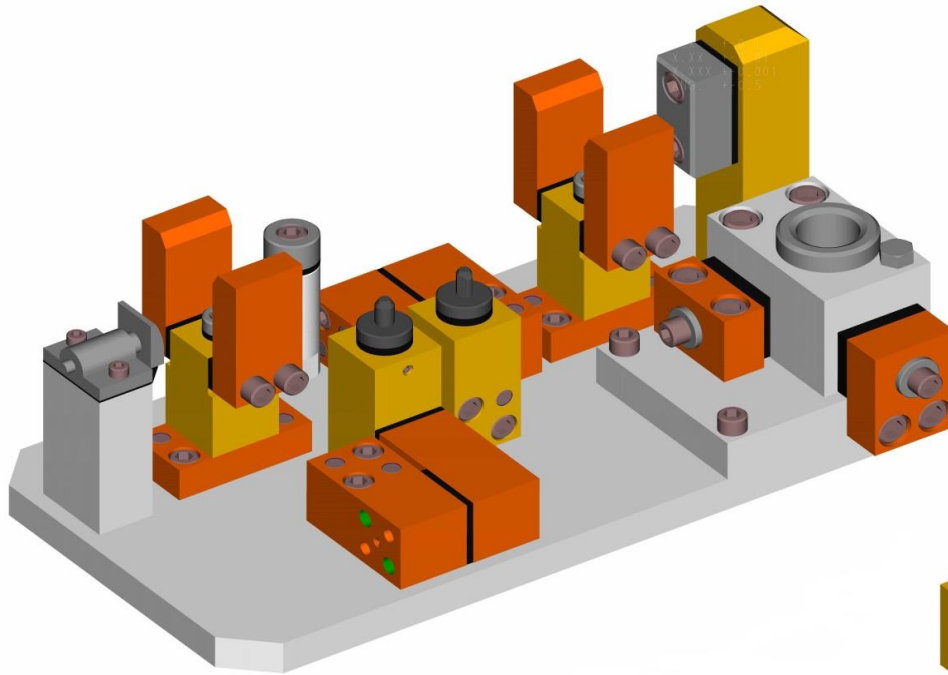
Plating

Our shims come conveniently packaged and labeled. Many of our customers find the need for plating is no longer necessary, however check with Rentapen for your specific plating needs.

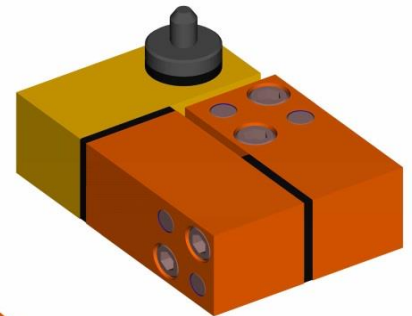


RAPid Tooling Components Sample Usage

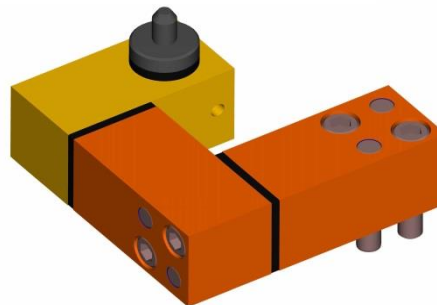
This weld fixture has only five parts which need to be designed and detailed. The rest of the components can be purchased from your distributor.



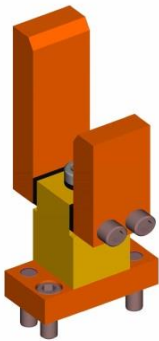
See the 32 different combinations you can create with RAPid Tooling blocks at Rentapen.com



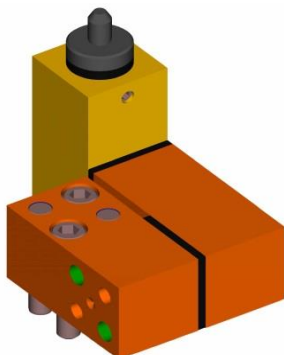
Sample 3 way positioning of a pin



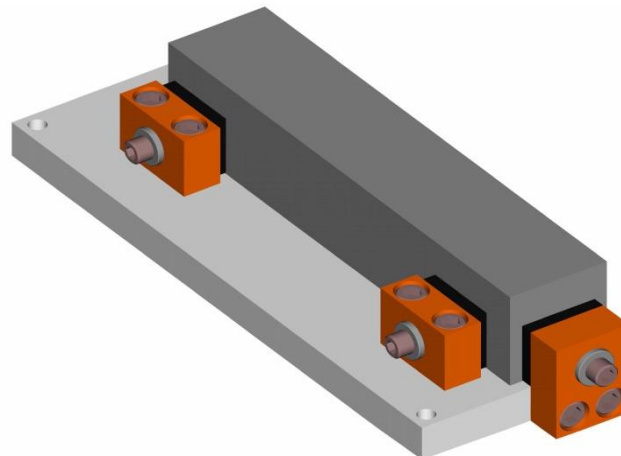
Sample 3 way positioning of a pin



Sample 2 way positioning of part



Sample 3 way positioning of a pin

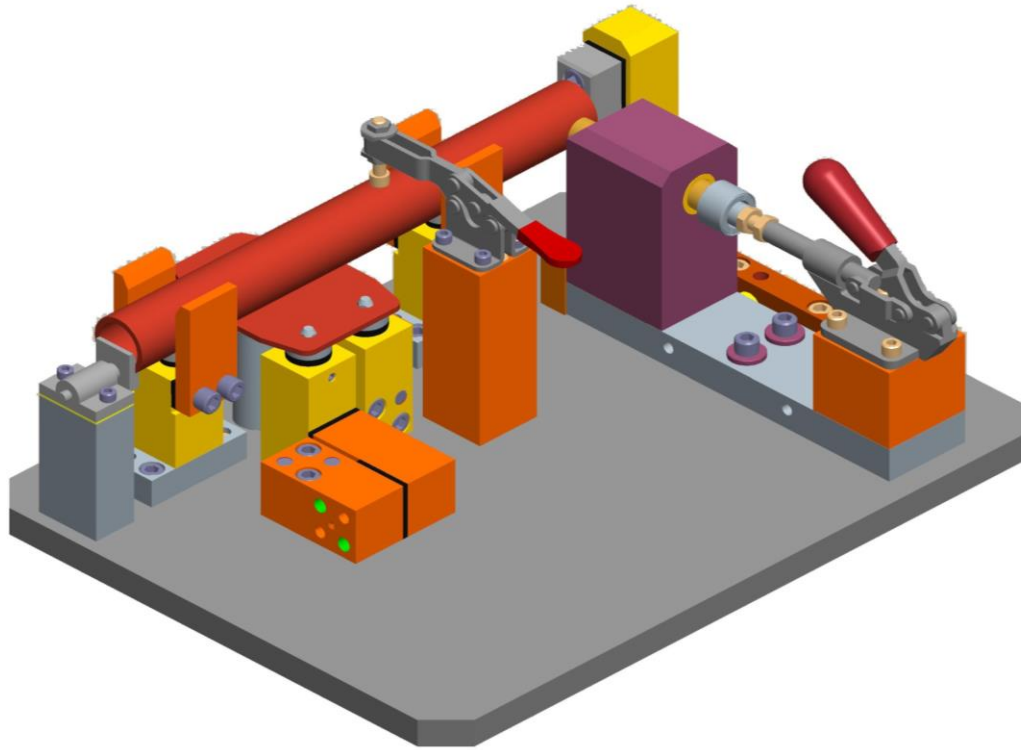


Sample 2 way positioning of a long part

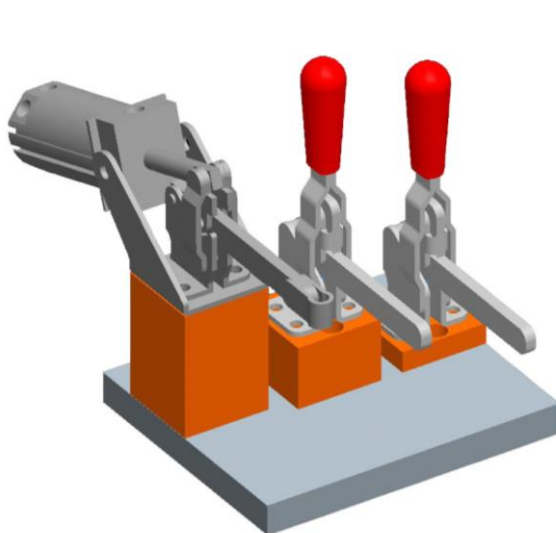


RAPid Tooling Components Sample Usage

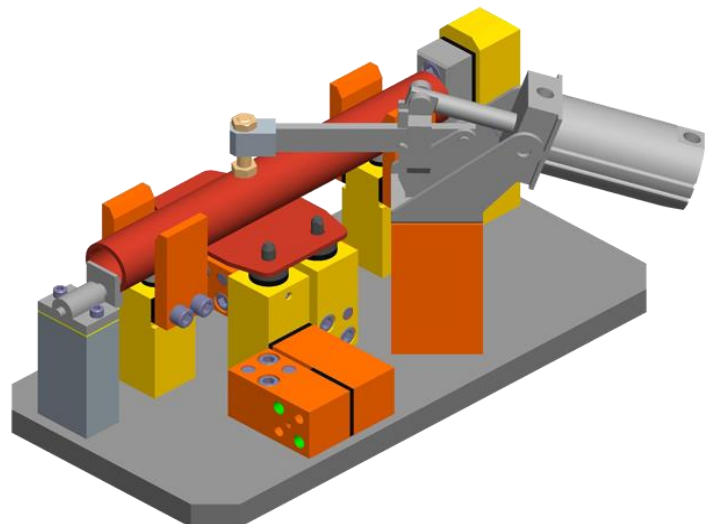
The Orange components are RAPid Blocks, RAPid Plates, and RAPid Risers. The yellow components are Altered RAPid Blocks.



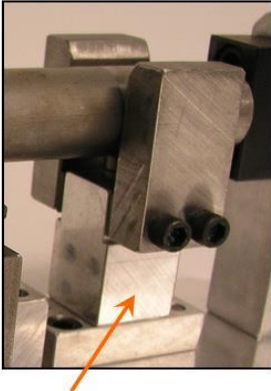
Fine-tune location of straight line action clamps with RAPid Blocks and RAPid Shims



RAPid Risers -- customize the height for your clamp brand and style



RAPid Tooling Components are used in weld fixtures where precision is needed.



RB02 4 Holed altered to create goal post using **Rapid Plates™**



RB02 4 Holes altered to hold rest pad.



RB02 4 Hole With a drawing from you we ship to you an altered block complete. *(Why handle it twice?)*

3 way locating pin adjustment by adding or removing **RAPid Shims™**

RB00 4 Holes

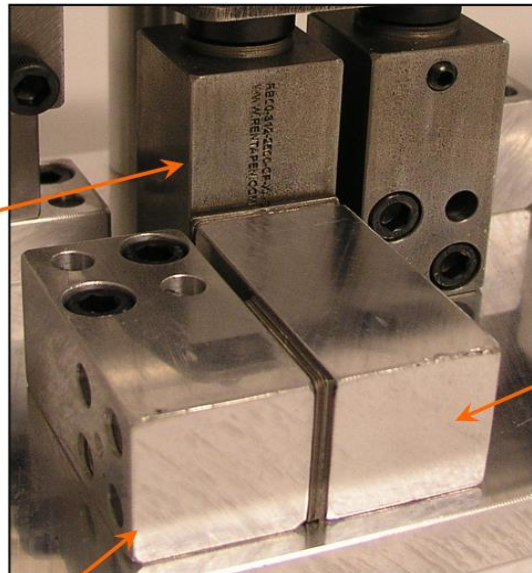


RB00 with 4 Holes including an alteration for a pin.

RB00 8 Holes



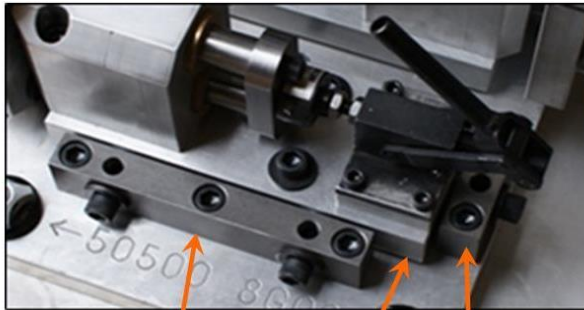
RB00 with 8 Holes Mounted to base plate



RB02 8 Holes



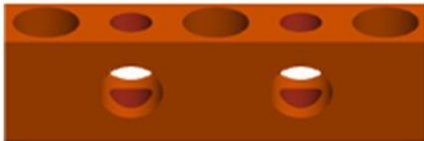
RB02 8 Hole used For adjustability



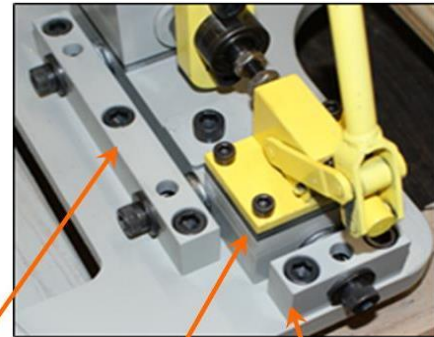
RB12
(2 dowel holes)

RB11

Can place shim pack under
base of sub assembly



Oversized holes allow for 3-way adjustability
with 1/8" (or less) thick shim packs



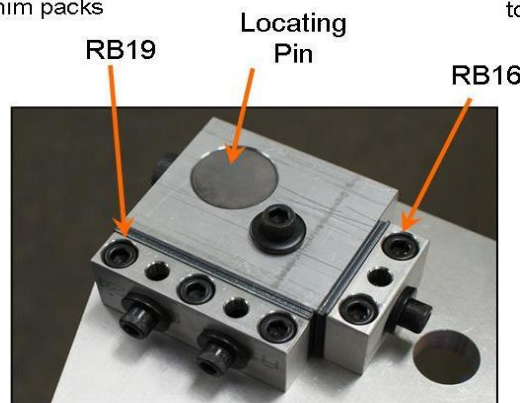
RB19
(2 dowel holes)

RB16
(1 dowel hole)

Can place shims under
individual components



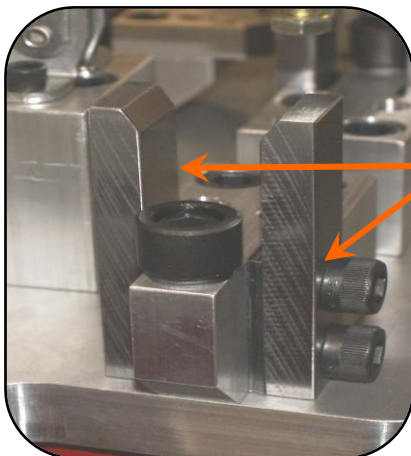
Slots allow for 2-way adjustability up
to 1/4" shim packs



RB19

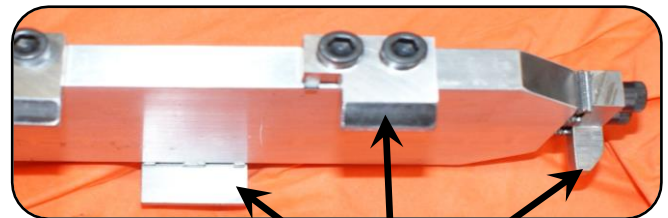
Locating
Pin

RB16



RP05 used in
"goal post"
for holding tubes,
rods, or plates.

Here shown --
right side with
drilled holes
and left side
with tap holes



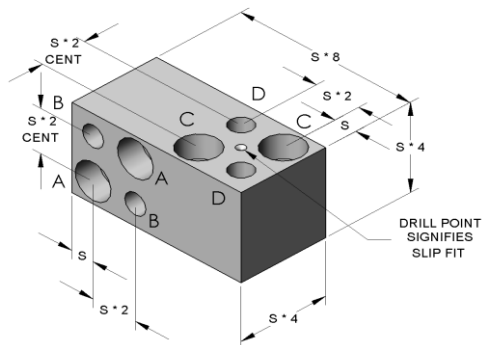
RP03 locating pick-off weld
template.



RAPid Blocks

STYLE 00 How to order -- **RB00** - [S] - [L] - [A][B][C][D][M]

(8) Holes

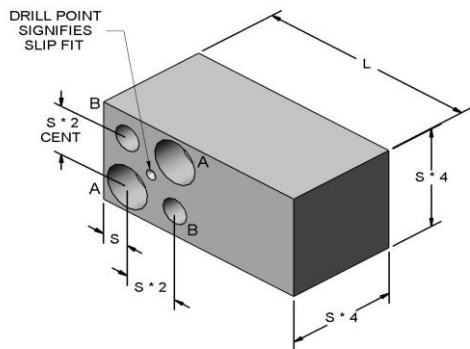


Part number example for ordering a block
RB00-M10-M80-CPCPS

(Screw) S	(Length) L*	(Hole) A	(Hole) B	(Hole) C	(Hole) D	(Material) M
250	2000 ~ 8000	C C'Bore both sides D Drill thru T Tap thru	P Press fit S Slip fit	C C'Bore both sides D Drill thru T Tap thru	P Press fit S Slip fit	S Mild Steel A Aluminum 3 300 Stainless
312	2500 ~ 8000					
375	3000 ~ 8000					
500	4000 ~ 8000					
M6	M48, M50 ~ M200					
M8	M64, M65 ~ M200					
M10	M80 ~ M200					
M12	M96, M100 ~ M200					

STYLE 00 How to order -- **RB00** - [S] - [L] - [A][B][C][D][M]

(4) Holes



Part number example for ordering a block
RB00-M10-M55-CPXXS

(Screw) S	(Length) L*	(Hole) A	(Hole) B	(Hole) C	(Hole) D	(Material) M
250	1000 ~ 8000	C C'Bore both sides D Drill thru T Tap thru	P Press fit S Slip fit	X No Hole	X No Hole	S Mild Steel A Aluminum 3 300 Stainless
312	1250 ~ 8000					
375	1500 ~ 8000					
500	2000 ~ 8000					
M6	M25 ~ M200					
M8	M35 ~ M200					
M10	M40 ~ M200					
M12	M50 ~ M200					

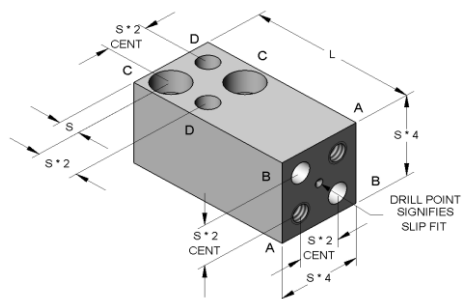
* Length increments are .250" for inch, or 5mm for metric



RAPid Blocks

STYLE 02 How to order -- RB02 - [S] - [L] - [A][B][C][D][M]

(8) Holes

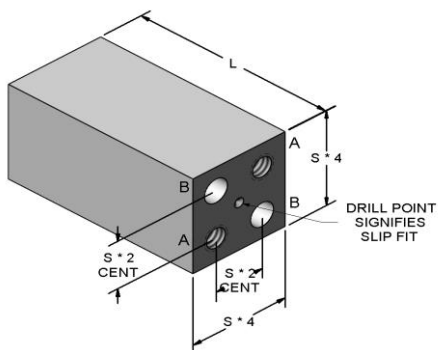


Part number example for ordering a block
RB02-312-3500-TSCP3

(Screw) S	(Length) L*	(Hole) A**	(Hole) B**	(Hole) C	(Hole) D	(Material) M
250	1750 ~ 8000	T Tap	S Slip fit	C C'Bore both sides D Drill thru T Tap thru	P Press fit S Slip fit	S Mild Steel A Aluminum 3 300 Stainless
312	2000 ~ 8000					
375	2500 ~ 8000					
500	3250 ~ 8000					
M6	M45 ~ M200					
M8	M55 ~ M200					
M10	M65 ~ M200					
M12	M80 ~ M200					

STYLE 02 How to order -- RB02 - [S] - [L] - [A][B][C][D][M]

(4) Holes



Part number example for ordering a block
RB02-312-3500-TSXX3

(Screw) S	(Length) L*	(Hole) A**	(Hole) B**	(Hole) C	(Hole) D	(Material) M
250	1000 ~ 8000	T Tap	S Slip fit	X No Hole	X No Hole	S Mild Steel A Aluminum 3 300 Stainless
312	1250 ~ 8000					
375	1500 ~ 8000					
500	2000 ~ 8000					
M6	M25 ~ M200					
M8	M35 ~ M200					
M10	M40 ~ M200					
M12	M50 ~ M200					

* Length increments are .250" for inch, or 5mm for metric

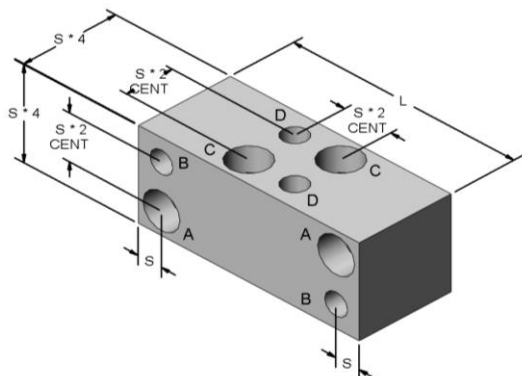
** Tap & Slip fit depth is (2 * Screw)



RAPid Blocks

STYLE 03 How to order -- RB03 - [S] - [L] - [A][B][C][D][M]

(8) Holes



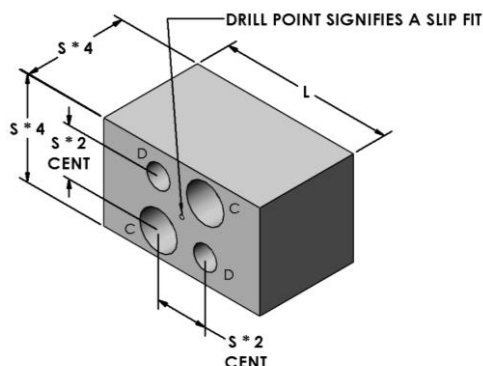
Part number example for ordering a block
RB03-250-2000-CPCPS

(Screw) S	(Length) L	(Hole) A	(Hole) B	(Hole) C	(Hole) D	(Material) M
250	2000 ~ 8000	C C'Bore both sides D Drill thru T Tap thru	P Press fit S Slip fit	C C'Bore both sides D Drill thru T Tap thru	P Press fit S Slip fit	S Mild Steel A Aluminum 3 300 Stainless
312	2500 ~ 8000					
375	3000 ~ 8000					
500	4000 ~ 8000					
M6	M50 ~ M200					
M8	M70 ~ M200					
M10	M80 ~ M200					
M12	M100 ~ M200					

RAPid Blocks

STYLE 03 How to order -- RB03 - [S] - [L] - [A][B][C][D][M]

(4) Holes



Part number example for ordering a block
RB03-250-2000-XXCPS

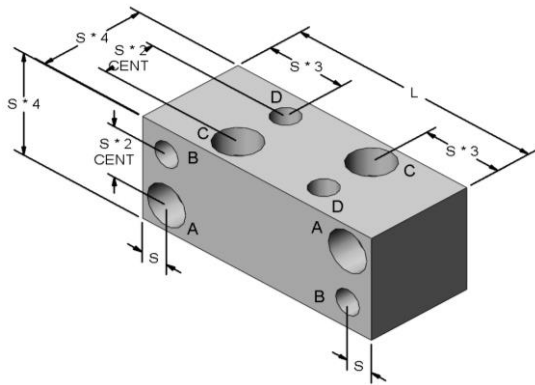
(Screw) S	(Length) L	(Hole) A	(Hole) B	(Hole) C	(Hole) D	(Material) M
250	1000 ~ 8000	X No hole	X No hole	C C'Bore both sides D Drill thru T Tap thru	P Press fit S Slip fit	S Mild Steel A Aluminum 3 300 Stainless
312	1250 ~ 8000					
375	1500 ~ 8000					
500	2000 ~ 8000					
M6	M25 ~ M200					
M8	M35 ~ M200					
M10	M40 ~ M200					
M12	M50 ~ M200					

(1) Length increments are .250" for inch, or 5mm for metric



STYLE 05 How to order -- RB05 - [S] - [L] - [A][B][C][D][M]

(8) Holes

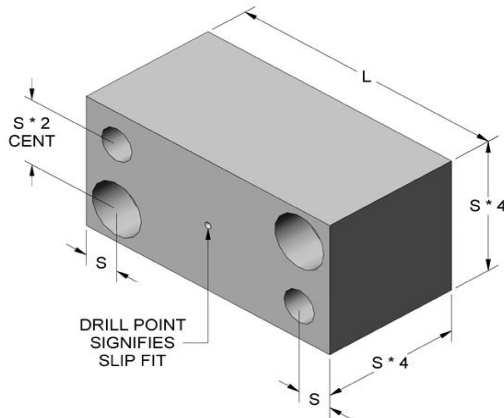


Part number example for ordering a block
RB05-250-2000-CPCPS

(Screw) S	(Length) L	(Hole) A	(Hole) B	(Hole) C	(Hole) D	(Material) M
250	2000 ~ 8000	C C'Bore both sides D Drill thru T Tap thru	P Press fit S Slip fit	C C'Bore both sides D Drill thru T Tap thru	P Press fit S Slip fit	S Mild Steel A Aluminum 3 300 Stainless
312	2500 ~ 8000					
375	3000 ~ 8000					
500	4000 ~ 8000					
M6	M50 ~ M200					
M8	M65 ~ M200					
M10	M80 ~ M200					
M12	M100 ~ M200					

STYLE 05 How to order -- RB05 - [S] - [L] - [A][B][C][D][M]

(4) Holes



Part number example for ordering a block
RB05-250-2000-CPXXS

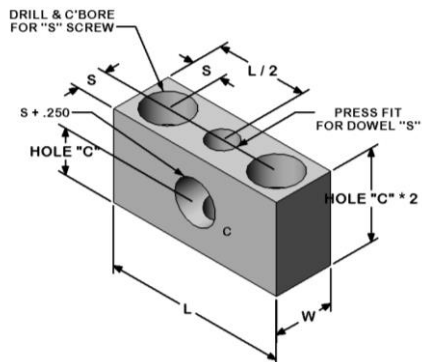
(Screw) S	(Length) L	(Hole) A	(Hole) B	(Hole) C	(Hole) D	(Material) M
250	1000 ~ 8000	C C'Bore both sides D Drill thru T Tap thru	P Press fit S Slip fit	X No hole	X No hole	S Mild Steel A Aluminum 3 300 Stainless
312	1250 ~ 8000					
375	1500 ~ 8000					
500	2000 ~ 8000					
M6	M25 ~ M200					
M8	M35 ~ M200					
M10	M40 ~ M200					
M12	M50 ~ M200					

(1) Length increments are .250" for inch, or 5mm for metric



RAPid Blocks

STYLE 11 How to order -- RB11 - [S] - [M]

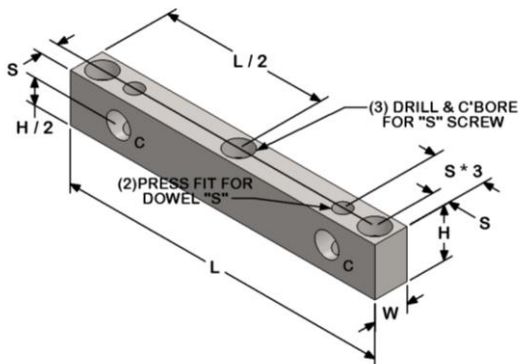


Part number example for ordering a block
RB11-250-3

Up to 3mm Shim Pack Spacing

(Screw) S	(Length) L	(Width) W	(Hole) C	(Material) M
250	1500	500	500	S Mild Steel A Aluminum 3 300 Stainless
312	1875	625	563	
375	2250	750	625	
500	3000	1000	750	
M6	36	12	12	
M8	48	16	14	
M10	60	20	16	
M12	72	24	18	

STYLE 12 How to order -- RB12 - [S] - [L] - [M]



Part number example for ordering a block
RB12-250-2500-3

Up to 3mm Shim Pack Spacing

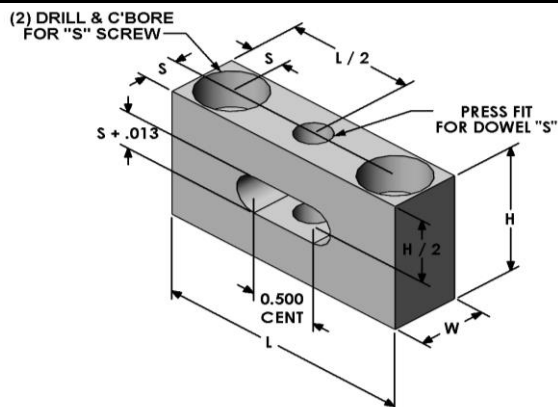
(Screw) S	(Length) L	(Width) W	(Height) H	(Hole) C	(Material) M
250	2500 ~ 6000	500	1000	500	S Mild Steel A Aluminum 3 300 Stainless
312	3250 ~ 7500	625	1125	563	
375	3750 ~ 9000	750	1250	625	
500	5000 ~ 12000	1000	1500	750	
M6	75 ~ 145	12	24	12	
M8	80 ~ 190	16	28	14	
M10	100 ~ 245	20	32	16	
M12	120 ~ 290	24	36	18	

(1) Length increments are .250" for inch, or 5mm for metric



RAPid Blocks

STYLE 16 How to order -- **RB16 - [S] - [M]**

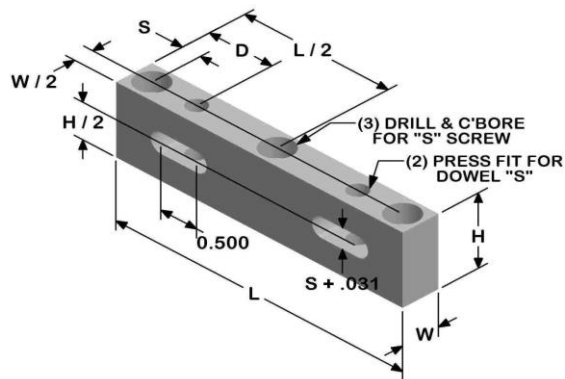


Part number example for ordering a block
RB16-250-3

Use with 3mm to 6mm Shim Pack Spacing

(Screw) S	(Length) L	(Width) W	(Height) H	(Material) M
250	1750	500	1000	S Mild Steel A Aluminum 3 300 Stainless
312	2000	625	1125	
375	2250	750	1250	
500	3000	1000	1500	
M6	45	12	24	
M8	55	16	28	
M10	65	20	32	
M12	75	24	36	

STYLE 19 How to order -- **RB19 - [S] - [L] - [M]**



Part number example for ordering a block
RB19-250-3000-3

Use with 3mm to 6mm Shim Pack Spacing

(Screw) S	(Length) L	(Width) W	(Height) H	(Distance) D	(Material) M
250	3000 ~ 6000	500	1000	875	S Mild Steel A Aluminum 3 300 Stainless
312	3500 ~ 7500	625	1125	1031	
375	4000 ~ 9000	750	1250	1188	
500	5000 ~ 12000	1000	1500	1500	
M6	75 ~ 145	12	24	21.75	
M8	90 ~ 190	16	28	26.5	
M10	105 ~ 245	20	32	30.75	
M12	120 ~ 290	24	36	36	

(1) Length increments are .250" for inch, or 5mm for metric



We will customize your RAPid Blocks or RAPid Plates for you!
Why handle the product twice!



To provide you with the best price, we make each RAPid Block when it is ordered. We save you time and money when we make your alterations to your blocks while we are working on it in our CNC! Just send us a drawing of your alterations to get a quote.

We work with our customer to keep RAPid tooling components FAST, FUN, and EFFICIENT.

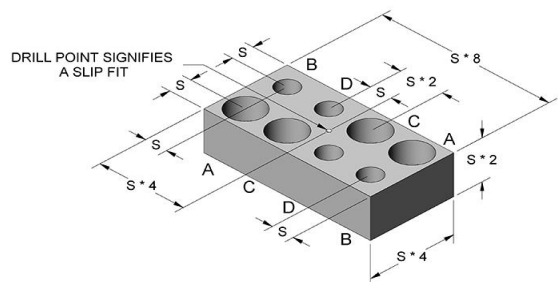
Add a bore for a locating pin or a tap for a rest pad.





RAPid Plates

STYLE 00 How to order -- **RP00** - [S] - [A][B][C][D][M]

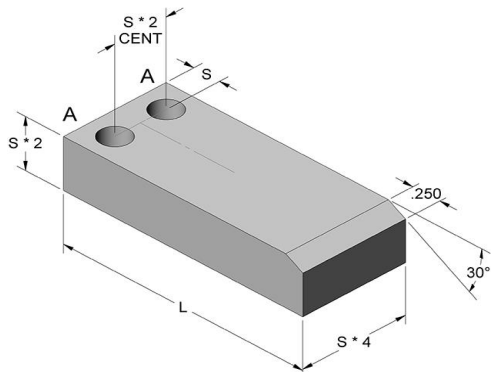


Part number example for ordering a plate
RP00-250-2000-NPNPS

Length is (S) Screw * 8

(Screw) S	(Hole) A (2)	(Hole) B (2)	(Hole) C (3)	(Hole) D (3)	(Material) M
250	N C'Bore near side D Drill thru T Tap thru X No Hole	P Press fit S Slip fit X No Hole	N C'Bore near side F C'Bore far side D Drill thru T Tap thru X No Hole	P Press fit S Slip fit X No Hole	S Mild Steel A Aluminum 3 300 Stainless
312					
375					
500					
M6					
M8					
M10					
M12					

STYLE 02 How to order -- **RP02** - [S] - [L] - [A][M]



Part number example for ordering a plate
RP02-375-5000-TB

(Screw) S	(Length) L (1)	(Hole) A	(Material) M
250	1000 ~ 3000	D Drill thru T Tap thru	S 4140PH DCF * B Ampco 18 3 300 Stainless
312	1250 ~ 4000		
375	1500 ~ 5000		
500	2000 ~ 6500		
M6	M25 ~ M70		
M8	M25 ~ M110		
M10	M30 ~ M130		
M12	M35 ~ M150		

*** Note:**

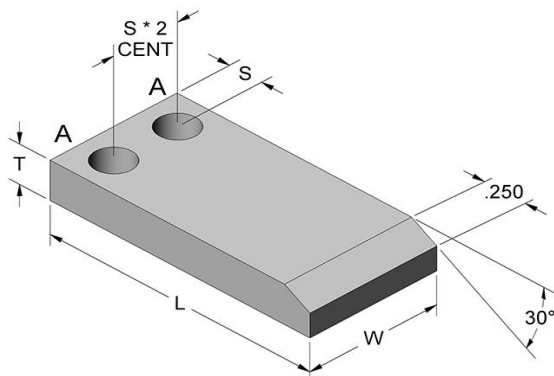
4140 material is supplied from the mills in an oversize condition. The height and width will not be machined to exact size. If an exact finish is required please add -F to the end of the part number and the part will be machined to nominal dimensions.

- (1) Length increments are .250" for inch, or 5mm for metric
- (2) If hole "A" is an "X", then hole "B" must also be an "X"
- (3) If hole "C" is an "X", then hole "D" must also be an "X"



RAPid Plates

STYLE 03 How to order -- RP03 - [S] - [L] - [A]/[M]



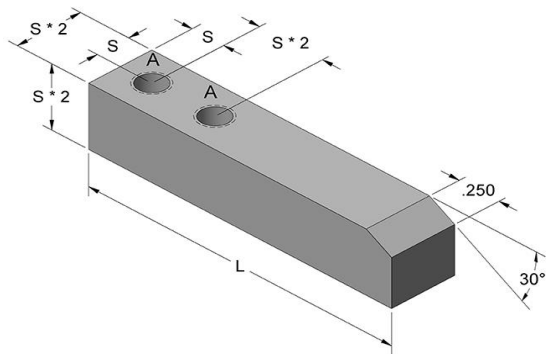
Part number example for ordering a plate
RP03-250-1000-DS

(Screw) S	(Length) L	(Width) W	(Thickness) T	(Hole) A	(Material) M
250	1000 ~ 3000	1000	250	D Drill thru T Tap thru	S 4140PH DCF * B Ampco 18 3 300 Stainless
312	1250 ~ 4000	1250	375		
375	1250 ~ 5000	1500	375		
500	1500 ~ 6500	2000	500		
M6	M25 ~ M70	1000	250		
M8	M25 ~ M110	1250	375		
M10	M30 ~ M130	1500	375		
M12	M35 ~ M150	2000	500		

*** Note:**

4140 material is supplied from the mills in an oversize condition. The height and width will not be machined to exact size. If an exact finish is required please add -F to the end of the part number and the part will be machined to nominal dimensions.

STYLE 04 How to order -- RP04 - [S] - [L] - [A]/[M]



Part number example for ordering a plate
RP04-250-1500-DS

(Screw) S	(Length) L	(Hole) A	(Material) M
250	1500 ~ 3000	D Drill thru T Tap thru	S 4140PH DCF * B Ampco 18 3 300 Stainless
312	1750 ~ 4000		
375	2000 ~ 5000		
500	2500 ~ 6500		
M6	M35 ~ M70		
M8	M45 ~ M110		
M10	M50 ~ M130		
M12	M60 ~ M150		

*** Note:**

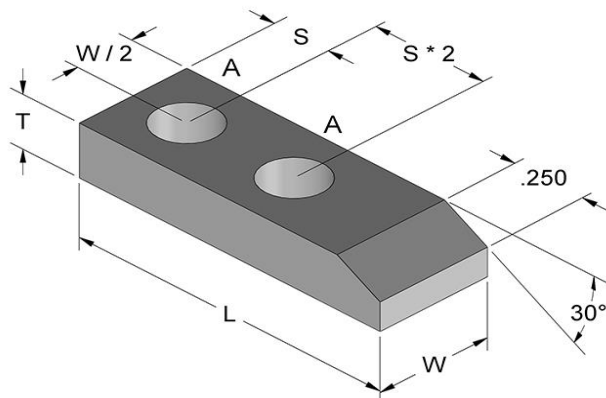
4140 material is supplied from the mills in an oversize condition. The height and width will not be machined to exact size. If an exact finish is required please add -F to the end of the part number and the part will be machined to nominal dimensions.

(1) Length increments are .250" for inch, or 5mm for metric



RAPid Plates

STYLE 05 How to order -- RP05 - [S] - [L] - [A]/[M]



Part number example for ordering a plate

RP05-250-1500-DS

(Screw) S	(Length) L	(Width) W	(Thick) T	(Hole) A	(Material) M
250	1500 ~ 3000	500"	250	D Drill thru T Tap thru	S 4140PH DCF * B Ampco 18 3 300 Stainless
312	1750 ~ 4000	625"	375		
375	2000 ~ 5000	750"	375		
500	2500 ~ 6500	1000"	500		
M6	M35 ~ M70	500"	250		
M8	M45 ~ M110	625"	375		
M10	M50 ~ M130	750"	375		
M12	M60 ~ M150	1000"	500		

*** Note:**

4140 material is supplied from the mills in an oversize condition. The height and width will not be machined to exact size. If an exact finish is required please add -F to the end of the part number and the part will be machined to nominal dimensions.

(1) Length increments are .250" for inch, or 5mm for metric



RENTAPEN LLC.

RAPid Tooling Components (RTC)

4 - 1

RAPid Shims that MATCH existing shim shapes

There are three sections to the part number, the **Prefix**, the **Shim** number, and the **Thickness** combinations.

your **Prefix** choices are

RMM - 1010 full hard steel
RSM - 300 series stainless steel

your matched **Shim** number goes next

Use any shim number from any manufacturer which you would like to match. If the shim manufacturer isn't in the partial list, we can still match it. Provide us with the manufacturer's name and use their shim number (without thickness designations) to build the shim number.

Partial Manufacturers list

NAAMS spec
 GM spec
 Ford spec
 Douglas Stamping Company
 Precision Brands
 Misumi

Examples of stripping the thickness designations

To match a NAAMS ASH302 shim use ASH3 for the Shim number.

To match a Douglas Stamping Company DSCP018-M100 shim use DCSP018 for the Shim number.

your **Thickness** choices are

Letter	A	B	C	D	E	J	K	L
Nominal	1/8 mm	1/4 mm	1/2 mm	1 mm	2 mm	1/64"	1/32"	1/16"
1010 Full Hard (oiled, not plated)								
Actual	.005"	.010"	.020"	.040"	.079"	.015"	.031"	.062"
Tolerance	± .0005	± .00075	± .003	± .0004	± .005	± .002	± .0015	± .005
300 series Stainless Steel (could be slightly magnetic)								
Actual	.005"	.010"	.020"	.042"	.075"	.015"	.031"	.060"
Tolerance	± .00024	± .00035	± .0005	± .0006	± .0004	± .00043	± .0006	± .003

How to order -- [Prefix] - [Shim number] - [Thickness]

Part number examples for ordering a single shim

RMM-ASH3-1A 1/8 mm thick 1010 full hard steel shim that matches an ASH3 NAAMS shape.
RSM-M FS 15-R-1D 1 mm thick, 300 series stainless shim that matches an M FS 15-R shape.
RSM-DSCH077-1D The same shim as the previous one using the Douglas Stamping Company part number.

Part number examples for ordering a shim pack

RSM-ASH5-2B3C1D1E (2) 1/4 mm, (3) 1/2 mm, (1) 1 mm, & (1) 2 mm thick shims for a total of 5mm, 300 series stainless steel that matches an ASH5 NAAMS shape.
RMM-DSCP018-6C (6) 1/2 mm, 1010 full hard shims that match the DSCP018 Douglas Stamping Company shape.

Ask your Rentapen about additional charges for plating.



RENTAPEN LLC.

RAPid Tooling Components (RTC)

4 - 2

RAPid Shims for use with EXISTING Components

There are three sections to the part number, the **Prefix**, the **Component** number, and the **Thickness** combinations.

your **Prefix** choices are

RMH	- 1010 full hard steel with HOLES
RMS	- 1010 full hard steel with SLOTS (not available with round components)
RSH	- 300 series stainless steel with HOLES
RSS	- 300 series stainless steel with SLOTS (not available with round components)

your **Component** choice goes next

Use any component number from any manufacturer which you would like to use a shim with. If the component manufacturer isn't in the partial list, we can still make a shim for it. Provide us with manufacturer's name and use their component number to build the shim number.

Partial Manufacturers list

Essentra Components	All American	Misumi
Jergens	TE-CO	
American Drill Bushing	Fixtureworks	
Carr Lane Mfg Co.	Fairlane	
Masterline	Peerless Tooling Components	

Partial Components list

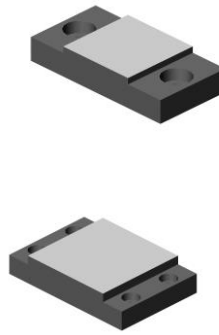
Flat feet



Locating pins



Rest pads



Jig feet



your **Thickness** choices are

Letter	A	B	C	D	E	J	K	L
Nominal	1/8 mm	1/4 mm	1/2 mm	1 mm	2 mm	1/64"	1/32"	1/16"
1010 Full Hard (oiled, not plated)								
Actual	.005"	.010"	.020"	.040"	.079"	.015"	.031"	.062"
Tolerance	± .0005	± .00075	± .003	± .0004	± .005	± .002	± .0015	± .005
300 series Stainless Steel (could be slightly magnetic)								
Actual	.005"	.010"	.020"	.042"	.075"	.015"	.031"	.060"
Tolerance	± .00024	± .00035	± .0005	± .0006	± .0004	± .00043	± .0006	± .003

How to order -- [Prefix] - [Component number] - [Thickness]

Part number example for ordering a single shim

RMH-JRP-9-1A 1/8 mm thick 1010 full hard steel shim with HOLES to be used with a Reid # JRP-9 Rest Pad

Part number example for ordering a shim pack

RMH-19302-2A3B2C1D (2) 1/8 mm, (3) 1/4mm, (2) 1/2 mm, & (1) 1 mm thick shims for a total of 3mm, 1010 full hard steel with HOLES to be used with a Jergens # 19302 Flat Foot



Custom Laser-cut to order

No minimum quantity, you can order one shim at a time

Eight standard thicknesses to choose from with optional thicknesses available

Cut as thin as .001" (.02mm) up to .078" (2.0mm)

150 watt Kern Laser

Table size: 52" by 50"

Stainless steel and 1010 Full Hard Mild Steel

AutoCAD 2000, DWG, or DXF files accepted and preferred

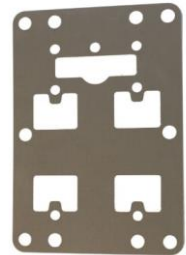
For quicker turn around and cutting accuracy include:

All dimensions

Thicknesses

Quantity for each thickness

Material preferred



RAPid Tooling Component laser cut shims are better Quality and More Accurate than Water Jet Cut Shims

Rapid Tooling Component Shims are LESS EXPENSIVE than shims made by EDM.



your **Thickness** choices are

Letter	A	B	C	D	E	J	K	L
Nominal	1/8 mm	1/4 mm	1/2 mm	1 mm	2 mm	1/64"	1/32"	1/16"
1010 Full Hard (oiled, not plated)								
Actual	.005"	.010"	.020"	.040"	.079"	.015"	.031"	.062"
Tolerance	± .0005	± .00075	± .003	± .0004	± .005	± .002	± .0015	± .005
300 series Stainless Steel (could be slightly magnetic)								
Actual	.005"	.010"	.020"	.042"	.075"	.015"	.031"	.060"
Tolerance	± .00024	± .00035	± .0005	± .0006	± .0004	± .00043	± .0006	± .003

How to order -- [Prefix] - [Shim number] - [Thickness]



RENTAPEN LLC.

RAPid Tooling Components (RTC)

4 - 4

RAPid Shims - User Defined

STYLE 03 How to order -- R[Material]03 - [OD] - [ID] - [Thickness]

See below for Material and Thickness choices

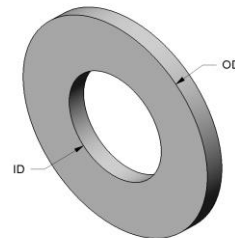
		Metric		
		minimum	maximum	increments
outside dia.	OD	4mm	292mm	0.1mm
inside dia.	ID	2mm	290mm	0.1mm
		Inch		
		minimum	maximum	increments
outside dia.	OD	3/16"	11.500"	.001"
inside dia.	ID	1/16"	11.375"	.001"

Individual shim number example

RS03-1000-536-1C

Shim pack number example

RM03-M30.8-M10.5-2A3B2C1D



STYLE 29 How to order -- R[Material]29 - [S] - [L] - [W] - [D] - [Thickness]

See below for Material and Thickness choices

		Metric		
		minimum	maximum	increments
screw size	S	1.6mm	24mm	
length	L	S * 4	292mm	1mm
width	W	S * 4	292mm	1mm
distance	D	S	W - S *	0.1mm
		Inch		
		minimum	maximum	increments
screw size	S	#6	1"	
length	L	S * 4	11.500"	1/16"
width	W	S * 4	11.500"	1/16"
distance	D	S	W-S *	.001"

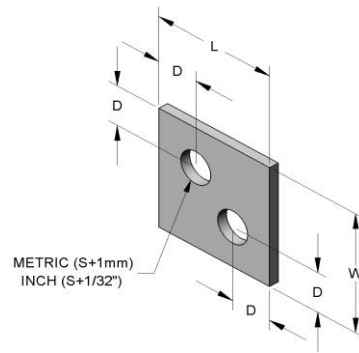
Individual shim number example

RM29-#10-1000-1000-312-1A

* L ≥ W

Shim pack number example

RS29-M1.6-M75-M50-M10-2A3B2C1D



STYLE 30 How to order -- R[Material]30 - [S] - [L] - [W] - [D] - [Thickness]

See below for Material and Thickness choices

		Metric		
		minimum	maximum	increments
screw size	S	1.6mm	24mm	
length	L	S * 4	292mm	1mm
width	W	S * 4	292mm	1mm
distance	D	S	W/2 - S *	0.1mm
		Inch		
		minimum	maximum	increments
screw size	S	#6	1"	
length	L	S * 4	11.500"	1/16"
width	W	S * 4	11.500"	1/16"
distance	D	S	W/2 - S *	.001"

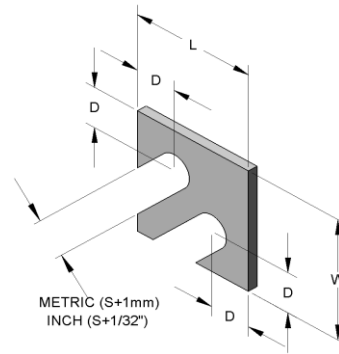
Individual shim number example

RM30-#10-1000-1000-312-1A

* L ≥ W

Shim pack number example

RS30-M1.6-M75-M50-M10-2A3B2C1D



Material choices

- S - 300 series stainless steel - plain
M - 1010 full hard steel - oiled, non plated

Thickness choices

Letter	A	B	C	D	E	J	K	L
Nominal	1/8 mm	1/4 mm	1/2 mm	1 mm	2 mm	1/64"	1/32"	1/16"
1010 Full Hard (oiled, not plated)								
Actual	.005"	.010"	.020"	.040"	.079"	.015"	.031"	.062"
Tolerance	± .0005	± .00075	± .003	± .0004	± .005	± .002	± .0015	± .005
300 series Stainless Steel (could be slightly magnetic)								
Actual	.005"	.010"	.020"	.042"	.075"	.015"	.031"	.060"
Tolerance	± .00024	± .00035	± .0005	± .0006	± .0004	± .00043	± .0006	± .003



RENTAPEN LLC.

RAPid Tooling Components (RTC)

4 - 5

RAPid Shims - User Defined

STYLE 32 How to order -- R[Material]32 - [S] - [L] - [W] - [D] - [E] - [Thickness]

See below for Material and Thickness choices

		Metric		
		minimum	maximum	increments
screw size	S	1.6mm	24mm	
length	L	S * 4	292mm	1mm
width	W	S * 4	290mm	1mm
distance	D	S * 2	L - (S * 2)	0.1mm
distance	E	S * 2	W - (S * 2)	0.1mm

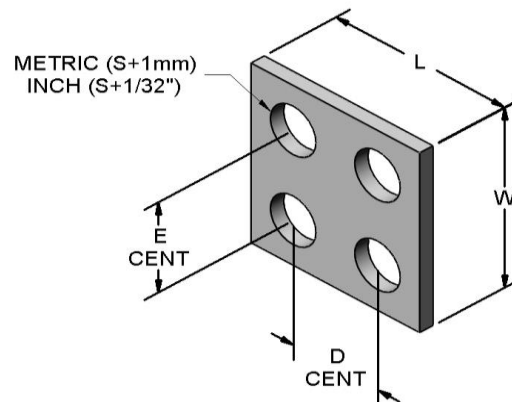
		Inch		
		minimum	maximum	increments
screw size	S	#6	1"	
length	L	S * 4	11.500"	1/16"
width	W	S * 4	11.500"	1/16"
distance	D	S * 2	L - (S * 2)	0.001"
distance	E	S * 2	W - (S * 2)	0.001"

Individual shim number example

RM32-250-1000-1000-500-500-1A

Shim pack number example

RS32-M6-M24-M24-M12-M12-2A3B2C1D



STYLE 33 How to order -- R[Material]33 - [S] - [L] - [W] - [D] - [E] - [Thickness]

See below for Material and Thickness choices

		Metric		
		minimum	maximum	increments
screw size	S	1.6mm	24mm	
length	L	S * 4	292mm	1mm
width	W	S * 2	290mm	1mm
distance	D	S * 2	L - (S * 2)	0.1mm
distance	E	S	W - S	0.1mm

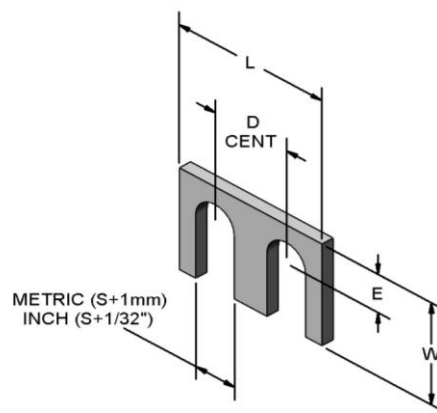
		Inch		
		minimum	maximum	increments
screw size	S	#6	1"	
length	L	S * 4	11.500"	1/16"
width	W	S * 2	11.500"	1/16"
distance	D	S * 2	L - (S * 2)	0.001"
distance	E	S	W - S	0.001"

Individual shim number example

RM33-250-1000-500-500-250-1A

Shim pack number example

RS33-M6-M24-M12-M12--M6-2A3B2C1D



Material choices

- S** - 300 series stainless steel - plain
- M** - 1010 full hard steel - oiled, non plated

Thickness choices

Letter	A	B	C	D	E	J	K	L
Nominal	1/8 mm	1/4 mm	1/2 mm	1 mm	2 mm	1/64"	1/32"	1/16"
1010 Full Hard (oiled, not plated)								
Actual	.005"	.010"	.020"	.040"	.079"	.015"	.031"	.062"
Tolerance	± .0005	± .00075	± .003	± .0004	± .005	± .002	± .0015	± .005
300 series Stainless Steel (could be slightly magnetic)								
Actual	.005"	.010"	.020"	.042"	.075"	.015"	.031"	.060"
Tolerance	± .00024	± .00035	± .0005	± .0006	± .0004	± .00043	± .0006	± .003



RAPid Shims - User Defined

STYLE 36 How to order -- R[Material]36 - [D1] - [D2] - [D3] - [D4] - [D6] - [Thickness]

See below for Material and Thickness choices

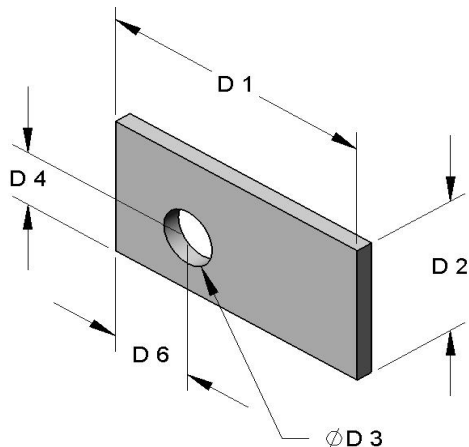
		Metric		
		minimum	maximum	increments
length	D1	Maximum length 292mm		0.1
width	D2	Maximum width 292mm		0.1
hole size	D3	Minimum of 2X Shim Stock		0.1
hole loc.	D4	Thickness Between All Shim		0.1
hole loc.	D6	Features & Edges		0.1
		Inch		
		minimum	maximum	increments
length	D1	Maximum length 11.500"		0.001"
width	D2	Maximum width 11.500"		0.001"
hole size	D3	Minimum of 2X Shim Stock		0.001"
hole loc.	D4	Thickness Between All Shim		0.001"
hole loc.	D6	Features & Edges		0.001"

Individual shim number example

RM36-1000-750-250-250-1A

Shim pack number example

RS36-M20-M15-M7-M6-M6-2A3B2C1D



STYLE 37 How to order -- R[Material]37 - [D1] - [D2] - [D3] - [D4] - [D6] - [D7] - [Thickness]

See below for Material and Thickness choices

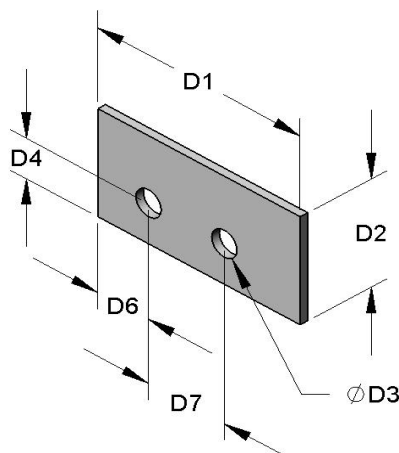
		Metric		
		minimum	maximum	increments
length	D1	Maximum length 292mm		0.1
width	D2	Maximum width 292mm		0.1
hole size	D3	Minimum of 2X Shim Stock		0.1
hole loc.	D4	Thickness Between All Shim		0.1
hole loc.	D6	Features & Edges		0.1
hole loc.	D7			0.1
		Inch		
		minimum	maximum	increments
length	D1	Maximum length 11.500"		0.001"
width	D2	Maximum width 11.500"		0.001"
hole size	D3	Minimum of 2X Shim Stock		0.001"
hole loc.	D4	Thickness Between All Shim		0.001"
hole loc.	D6	Features & Edges		0.001"
hole loc.	D7			0.001"

Individual shim number example

RM37-1500-1000-250-250-500-1A

Shim pack number example

RS37-M60-M25-M6-M6-M6-M12-2A3B2C1D



Material choices

- S - 300 series stainless steel - plain
- M - 1010 full hard steel - oiled, non plated

Thickness choices

Letter	A	B	C	D	E	J	K	L
Nominal	1/8 mm	1/4 mm	1/2 mm	1 mm	2 mm	1/64"	1/32"	1/16"
1010 Full Hard (oiled, not plated)								
Actual	.005"	.010"	.020"	.040"	.079"	.015"	.031"	.062"
Tolerance	± .0005	± .00075	± .003	± .0004	± .005	± .002	± .0015	± .005
300 series Stainless Steel (could be slightly magnetic)								
Actual	.005"	.010"	.020"	.042"	.075"	.015"	.031"	.060"
Tolerance	± .00024	± .00035	± .0005	± .0006	± .0004	± .00043	± .0006	± .003



RENTAPEN LLC.

RAPid Tooling Components (RTC)

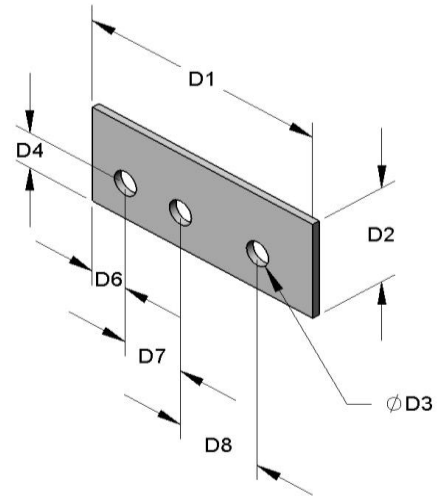
4 - 7

RAPid Shims - User Defined

STYLE 38 How to order -- R[Material]38 - [D1] - [D2] - [D3] - [D4] - [D6] - [D7] - [D8] - [Thickness]

See below for Material and Thickness choices

		Metric		
		minimum	maximum	increments
length	D1	Maximum length 292mm		0.1
width	D2	Maximum width 292mm		0.1
hole size	D3	Minimum of 2X Shim Stock Thickness Between All Shim Features & Edges		0.1
hole loc.	D4			0.1
hole loc.	D6			0.1
hole loc.	D7			0.1
hole loc.	D8			0.1
		Inch		
		minimum	maximum	increments
length	D1	Maximum length 11.500"		0.001"
width	D2	Maximum width 11.500"		0.001"
hole size	D3	Minimum of 2X Shim Stock Thickness Between All Shim Features & Edges		0.001"
hole loc.	D4			0.001"
hole loc.	D6			0.001"
hole loc.	D7			0.001"
hole loc.	D8			0.001"



Individual shim number example

RM38-1750-750-250-250-500-500-1A

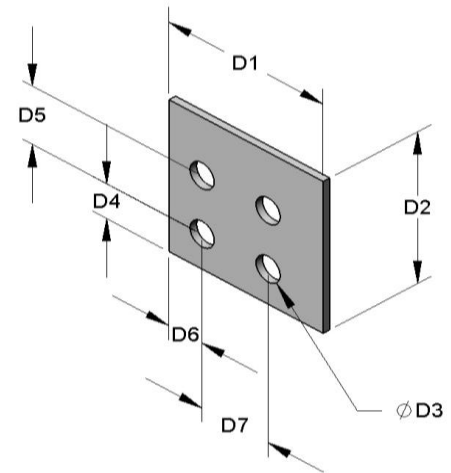
Shim pack number example

RS38-M60-M20-M6-M6-M12-M12-2A3B2C1D

STYLE 39 How to order -- R[Material]39 - [D1] - [D2] - [D3] - [D4] - [D5] - [D6] - [D7] - [Thickness]

See below for Material and Thickness choices

		Metric		
		minimum	maximum	increments
length	D1	Maximum length 292mm		0.1
width	D2	Maximum width 292mm		0.1
hole size	D3	Minimum of 2X Shim Stock Thickness Between All Shim Features & Edges		0.1
hole loc.	D4			0.1
hole loc.	D6			0.1
hole loc.	D7			0.1
		Inch		
		minimum	maximum	increments
length	D1	Maximum length 11.500"		0.001"
width	D2	Maximum width 11.500"		0.001"
hole size	D3	Minimum of 2X Shim Stock Thickness Between All Shim Features & Edges		0.001"
hole loc.	D4			0.001"
hole loc.	D6			0.001"
hole loc.	D7			0.001"



Individual shim number example

RM39-1500-1000-250-250-500-250-500-1A

Shim pack number example

RS39-M60-M25-M6-M6-M12-M6-M12-2A3B2C1D

Material choices

- S** - 300 series stainless steel - plain
M - 1010 full hard steel - oiled, non plated

Thickness choices

Letter	A	B	C	D	E	J	K	L
Nominal	1/8 mm	1/4 mm	1/2 mm	1 mm	2 mm	1/64"	1/32"	1/16"
1010 Full Hard (oiled, not plated)								
Actual	.005"	.010"	.020"	.040"	.079"	.015"	.031"	.062"
Tolerance	± .0005	± .00075	± .003	± .0004	± .005	± .002	± .0015	± .005
300 series Stainless Steel (could be slightly magnetic)								
Actual	.005"	.010"	.020"	.042"	.075"	.015"	.031"	.060"
Tolerance	± .00024	± .00035	± .0005	± .0006	± .0004	± .00043	± .0006	± .003



RENTAPEN LLC.

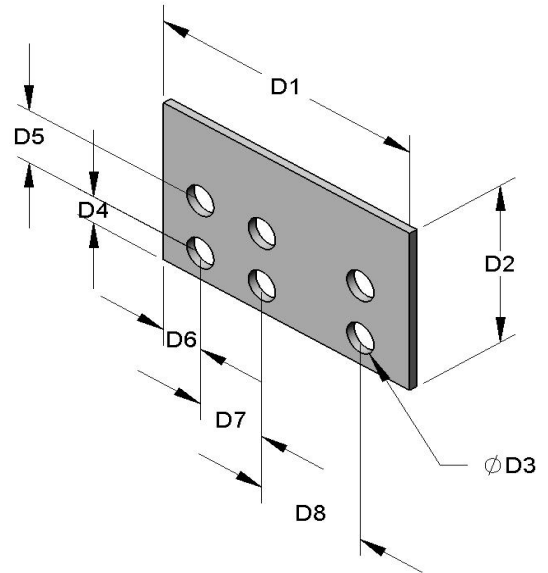
RAPid Tooling Components (RTC)

RAPid Shims - User Defined

STYLE 40 How to order -- R[Material]40 - [D1] - [D2] - [D3] - [D4] - [D5] - [D6] - [D7] - [D8] - [Thick]

See below for Material and Thickness choices

		Metric		
		minimum	maximum	increments
length	D1	Maximum length 292mm		0.1
width	D2	Maximum width 292mm		0.1
hole size	D3	Minimum of 2X Shim Stock Thickness Between All Shim Features & Edges		0.1
hole loc.	D4			0.1
hole loc.	D5			0.1
hole loc.	D6			0.1
hole loc.	D7			0.1
hole loc.	D8			0.1
		Inch		
		minimum	maximum	increments
length	D1	Maximum length 11.500"		0.001"
width	D2	Maximum width 11.500"		0.001"
hole size	D3	Minimum of 2X Shim Stock Thickness Between All Shim Features & Edges		0.001"
hole loc.	D4			0.001"
hole loc.	D5			0.001"
hole loc.	D6			0.001"
hole loc.	D7			0.001"
hole loc.	D8			0.001"



Individual shim number example

RM40-1750-1000-250-250-500-250-500-1A

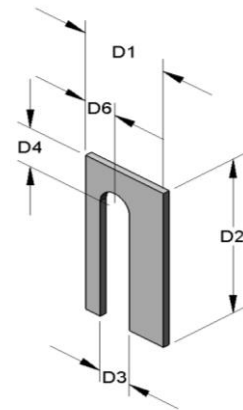
Shim pack number example

RS40-M60-M25-M6-M6-M12-M6-M12-M12-2A3B2C1D

STYLE 41 How to order -- R[Material]41 - [D1] - [D2] - [D3] - [D4] - [D6] - [Thickness]

See below for Material and Thickness choices

		Metric		
		minimum	maximum	increments
length	D1	Maximum length 292mm		0.1
width	D2	Maximum width 292mm		0.1
hole size	D3	Minimum of 2X Shim Stock Thickness Between All Shim Features & Edges		0.1
hole loc.	D4			0.1
hole loc.	D6			0.1
		Inch		
		minimum	maximum	increments
length	D1	Maximum length 11.500"		0.001"
width	D2	Maximum width 11.500"		0.001"
hole size	D3	Minimum of 2X Shim Stock Thickness Between All Shim Features & Edges		0.001"
hole loc.	D4			0.001"
hole loc.	D6			0.001"



Individual shim number example

RM41-750-1000-250-250-1A

Shim pack number example

RS41-M20-M25-M6-M6-M6-2A3B2C1D

Material choices

- S** - 300 series stainless steel - plain
M - 1010 full hard steel - oiled, non plated

Thickness choices

Letter	A	B	C	D	E	J	K	L
Nominal	1/8 mm	1/4 mm	1/2 mm	1 mm	2 mm	1/64"	1/32"	1/16"
1010 Full Hard (oiled, not plated)								
Actual	.005"	.010"	.020"	.040"	.079"	.015"	.031"	.062"
Tolerance	± .0005	± .00075	± .003	± .0004	± .005	± .002	± .0015	± .005
300 series Stainless Steel (could be slightly magnetic)								
Actual	.005"	.010"	.020"	.042"	.075"	.015"	.031"	.060"
Tolerance	± .00024	± .00035	± .0005	± .0006	± .0004	± .00043	± .0006	± .003

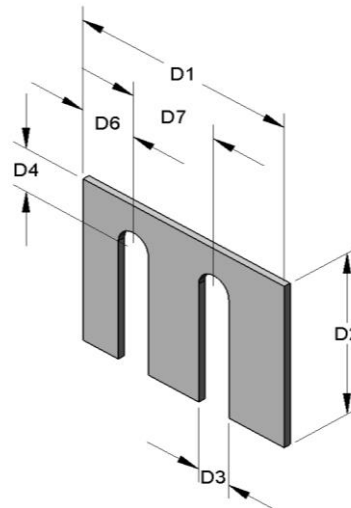


RAPid Shims - User Defined

STYLE 42 How to order -- R[Material]42 - [D1] - [D2] - [D3] - [D4] - [D6] - [D7] - [Thickness]

See below for Material and Thickness choices

		Metric		
		minimum	maximum	increments
length	D1	Maximum length 292mm		0.1
width	D2	Maximum width 292mm		0.1
hole size	D3	Minimum of 2X Shim Stock		0.1
hole loc.	D4	Thickness Between All Shim Features & Edges		0.1
hole loc.	D6			0.1
hole loc.	D7			0.1
		Inch		
		minimum	maximum	increments
length	D1	Maximum length 11.500"		0.001"
width	D2	Maximum width 11.500"		0.001"
hole size	D3	Minimum of 2X Shim Stock		0.001"
hole loc.	D4	Thickness Between All Shim Features & Edges		0.001"
hole loc.	D6			0.001"
hole loc.	D7			0.001"



Individual shim number example

RM42-1000-750-250-250-500-1A

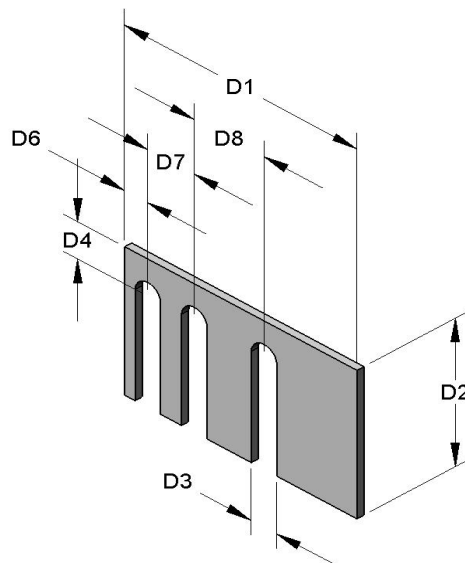
Shim pack number example

RS42-M20-M15-M5-M5-M5-M10-2A3B2C1D

STYLE 43 How to order -- R[Material]43 - [D1] - [D2] - [D3] - [D4] - [D6] - [D7] - [D8] - [Thickness]

See below for Material and Thickness choices

		Metric		
		minimum	maximum	increments
length	D1	Maximum length 292mm		0.1
width	D2	Maximum width 292mm		0.1
hole size	D3	Minimum of 2X Shim Stock		0.1
hole loc.	D4	Thickness Between All Shim Features & Edges		0.1
hole loc.	D6			0.1
hole loc.	D7			0.1
hole loc.	D8			0.1
		Inch		
		minimum	maximum	increments
length	D1	Maximum length 11.500"		0.001"
width	D2	Maximum width 11.500"		0.001"
hole size	D3	Minimum of 2X Shim Stock		0.001"
hole loc.	D4	Thickness Between All Shim Features & Edges		0.001"
hole loc.	D6			0.001"
hole loc.	D7			0.001"
hole loc.	D8			0.001"



Individual shim number example

RM43-2000-750-250-250-500-500-1A

Shim pack number example

RS43-M75-M15-M6-M6-M6-M12-M12-2A3B2C1D

Material choices

- S** - 300 series stainless steel - plain
M - 1010 full hard steel - oiled, non plated

Thickness choices

Letter	A	B	C	D	E	J	K	L
Nominal	1/8 mm	1/4 mm	1/2 mm	1 mm	2 mm	1/64"	1/32"	1/16"
1010 Full Hard (oiled, not plated)								
Actual	.005"	.010"	.020"	.040"	.079"	.015"	.031"	.062"
Tolerance	± .0005	± .00075	± .003	± .0004	± .005	± .002	± .0015	± .005
300 series Stainless Steel (could be slightly magnetic)								
Actual	.005"	.010"	.020"	.042"	.075"	.015"	.031"	.060"
Tolerance	± .00024	± .00035	± .0005	± .0006	± .0004	± .00043	± .0006	± .003



RENTAPEN LLC.

RAPid Tooling Components (RTC)

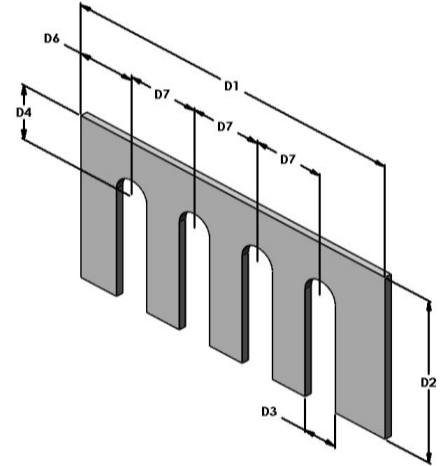
4 - 10

RAPid Shims - User Defined

STYLE 44 How to order -- R[Material]44 - [D1] - [D2] - [D3] - [D4] - [D6] - [D7] - [Thickness]

See below for Material and Thickness choices

		Metric		
		minimum	maximum	increments
length	D1	Maximum length 292mm		0.1
width	D2	Maximum width 292mm		0.1
hole size	D3	Minimum of 2X Shim Stock		0.1
hole loc.	D4	Thickness Between All Shim Features & Edges		0.1
hole loc.	D6			0.1
hole loc.	D7			0.1
		Inch		
		minimum	maximum	increments
length	D1	Maximum length 11.500"		0.001"
width	D2	Maximum width 11.500"		0.001"
hole size	D3	Minimum of 2X Shim Stock		0.001"
hole loc.	D4	Thickness Between All Shim Features & Edges		0.001"
hole loc.	D6			0.001"
hole loc.	D7			0.001"



Individual shim number example

RM44-2500-750-250-250-500-1A

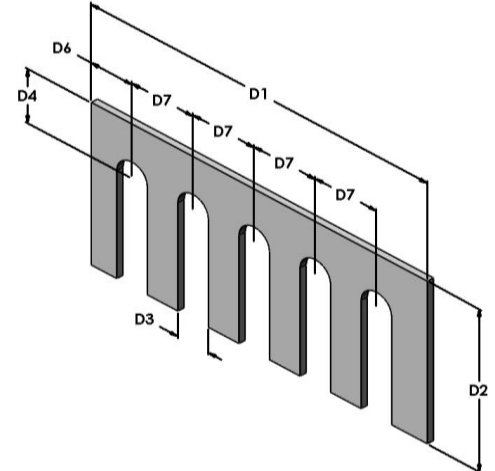
Shim pack number example

RS44-M75-M15-M6-M6-M6-M12-2A3B2C1D

STYLE 45 How to order -- R[Material]45 - [D1] - [D2] - [D3] - [D4] - [D6] - [D7] - [Thickness]

See below for Material and Thickness choices

		Metric		
		minimum	maximum	increments
length	D1	Maximum length 292mm		0.1
width	D2	Maximum width 292mm		0.1
hole size	D3	Minimum of 2X Shim Stock		0.1
hole loc.	D4	Thickness Between All Shim Features & Edges		0.1
hole loc.	D6			0.1
hole loc.	D7			0.1
		Inch		
		minimum	maximum	increments
length	D1	Maximum length 11.500"		0.001"
width	D2	Maximum width 11.500"		0.001"
hole size	D3	Minimum of 2X Shim Stock		0.001"
hole loc.	D4	Thickness Between All Shim Features & Edges		0.001"
hole loc.	D6			0.001"
hole loc.	D7			0.001"



Individual shim number example

RM45-3000-750-250-250-500-1A

Shim pack number example

RS45-M75-M15-M6-M6-M6-M12-2A3B2C1D

Material choices

- S - 300 series stainless steel - plain
M - 1010 full hard steel - oiled, non plated

Thickness choices

Letter	A	B	C	D	E	J	K	L
Nominal	1/8 mm	1/4 mm	1/2 mm	1 mm	2 mm	1/64"	1/32"	1/16"
1010 Full Hard (oiled, not plated)								
Actual	.005"	.010"	.020"	.040"	.079"	.015"	.031"	.062"
Tolerance	± .0005	± .00075	± .003	± .0004	± .005	± .002	± .0015	± .005
300 series Stainless Steel (could be slightly magnetic)								
Actual	.005"	.010"	.020"	.042"	.075"	.015"	.031"	.060"
Tolerance	± .00024	± .00035	± .0005	± .0006	± .0004	± .00043	± .0006	± .003



RENTAPEN LLC.

RAPid Tooling Components (RTC)

4 - 11

RAPid Shims - Screw Defined

STYLE 05 How to order -- R[Material]05 - [S] - [L] - [W] - [Thickness]

See below for Material and Thickness choices

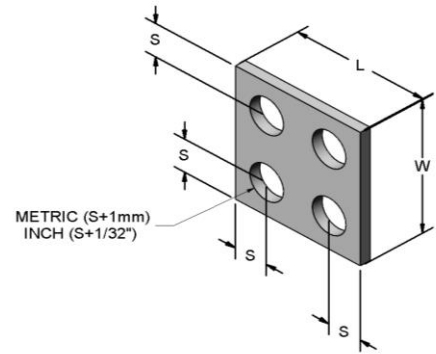
		Metric		
		minimum	maximum	increments
screw size	S	1.6mm	24mm	
length	L	S * 4	292mm	0.1
width	W	S * 4	292mm	0.1
		Inch		
		minimum	maximum	increments
screw size	S	#6	1"	
length	L	S * 4	11.500"	1/16"
width	W	S * 4	11.500"	1/16"

Individual shim number example

RM05-250-1000-1000-1A

Shim pack number example

RS05-M6-M24-M24-2A3B2C1D



STYLE 06 How to order -- R[Material]06 - [S] - [L] - [W] - [Thickness]

See below for Material and Thickness choices

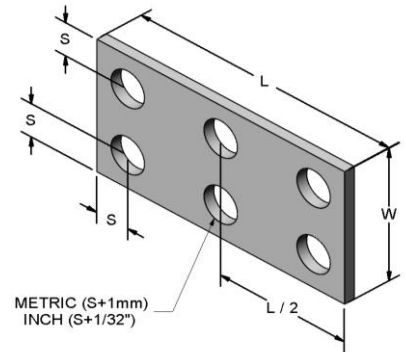
		Metric		
		minimum	maximum	increments
screw size	S	1.6mm	24mm	
length	L	S * 6	292mm	1mm
width	W	S * 4	290mm	1mm
		Inch		
		minimum	maximum	increments
screw size	S	#0	1"	
length	L	S * 6	11.500"	1/16"
width	W	S * 4	11.500"	1/16"

Individual shim number example

RM06-250-1500-1000-1A

Shim pack number example

RS06-M6-M50-M24-2A3B2C1D



STYLE 07 How to order -- R[Material]07 - [S] - [L] - [W] - [Thickness]

See below for Material and Thickness choices

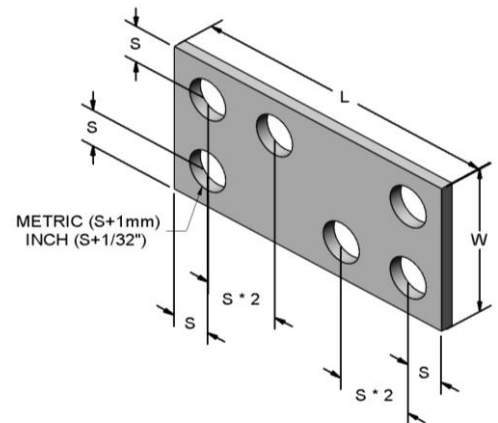
		Metric		
		minimum	maximum	increments
screw size	S	1.6mm	24mm	
length	L	S * 8	292mm	1mm
width	W	S * 4	290mm	1mm
		Inch		
		minimum	maximum	increments
screw size	S	#6	1"	
length	L	S * 8	11.500"	1/16"
width	W	S * 4	11.500"	1/16"

Individual shim number example

RM07-250-2000-1000-1A

Shim pack number example

RS07-M6-M48-M24-2A3B2C1D



Material choices

- S** - 300 series stainless steel - plain
M - 1010 full hard steel - oiled, non plated

Thickness choices

Letter	A	B	C	D	E	J	K	L
Nominal	1/8 mm	1/4 mm	1/2 mm	1 mm	2 mm	1/64"	1/32"	1/16"
1010 Full Hard (oiled, not plated)								
Actual	.005"	.010"	.020"	.040"	.079"	.015"	.031"	.062"
Tolerance	± .0005	± .00075	± .003	± .0004	± .005	± .002	± .0015	± .005
300 series Stainless Steel (could be slightly magnetic)								
Actual	.005"	.010"	.020"	.042"	.075"	.015"	.031"	.060"
Tolerance	± .00024	± .00035	± .0005	± .0006	± .0004	± .00043	± .0006	± .003



RENTAPEN LLC.

RAPid Tooling Components (RTC)

4 - 12

RAPid Shims - Screw Defined

STYLE 13 How to order -- R[Material]13 - [S] - [L] - [W] - [Thickness]

See below for Material and Thickness choices

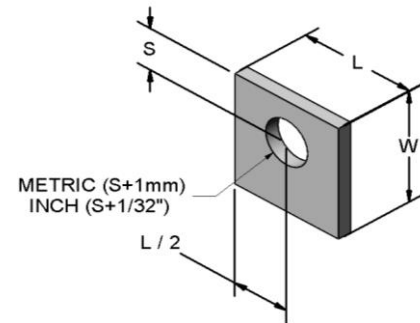
		Metric		
		minimum	maximum	increments
screw size	S	1.6mm	24mm	
length	L	S * 2	292mm	1mm
width	W	S * 2	292mm	1mm
		Inch		
		minimum	maximum	increments
screw size	S	#6	1"	
length	L	S * 2	11.500"	1/16"
width	W	S * 2	11.500"	1/16"

Individual shim number example

RM13-250-500-500-1A

Shim pack number example

RS13-M6-M12-M12-2A3B2C1D



STYLE 14 How to order -- R[Material]14 - [S] - [L] - [W] - [Thickness]

See below for Material and Thickness choices

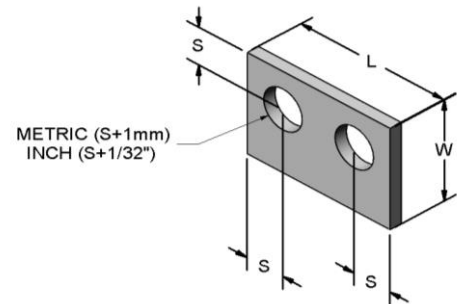
		Metric		
		minimum	maximum	increments
screw size	S	1.6mm	24mm	
length	L	S * 4	292mm	1mm
width	W	S * 2	290mm	1mm
		Inch		
		minimum	maximum	increments
screw size	S	#6	1"	
length	L	S * 4	11.500"	1/16"
width	W	S * 2	11.500"	1/16"

Individual shim number example

RM14-250-1000-500-1A

Shim pack number example

RS14-M6-M24-M12-2A3B2C1D



STYLE 15 How to order -- R[Material]15 - [S] - [L] - [W] - [Thickness]

See below for Material and Thickness choices

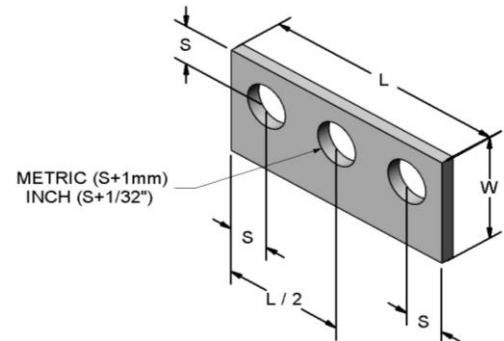
		Metric		
		minimum	maximum	increments
screw size	S	1.6mm	24mm	
length	L	S * 6	292mm	1mm
width	W	S * 2	290mm	1mm
		Inch		
		minimum	maximum	increments
screw size	S	#6	1"	
length	L	S * 6	11.500"	1/16"
width	W	S * 2	11.500"	1/16"

Individual shim number example

RM15-250-1500-500-1A

Shim pack number example

RS15-M6-M36-M12-2A3B2C1D



Material choices

- S** - 300 series stainless steel - plain
M - 1010 full hard steel - oiled, non plated

Thickness choices

Letter	A	B	C	D	E	J	K	L
Nominal	1/8 mm	1/4 mm	1/2 mm	1 mm	2 mm	1/64"	1/32"	1/16"
1010 Full Hard (oiled, not plated)								
Actual	.005"	.010"	.020"	.040"	.079"	.015"	.031"	.062"
Tolerance	± .0005	± .00075	± .003	± .0004	± .005	± .002	± .0015	± .005
300 series Stainless Steel (could be slightly magnetic)								
Actual	.005"	.010"	.020"	.042"	.075"	.015"	.031"	.060"
Tolerance	± .00024	± .00035	± .0005	± .0006	± .0004	± .00043	± .0006	± .003



RENTAPEN LLC.

RAPid Tooling Components (RTC)

4 - 13

RAPid Shims - Screw Defined

STYLE 16 How to order -- R[Material]16 - [S] - [L] - [W] - [Thickness]

See below for Material and Thickness choices

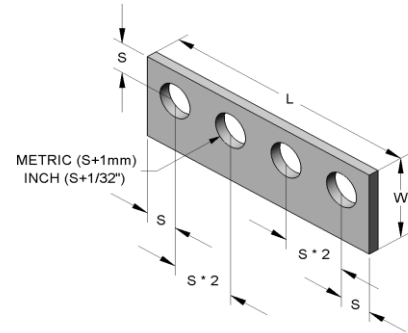
		Metric		
		minimum	maximum	increments
screw size	S	1.6mm	24mm	
length	L	S * 8	292mm	1mm
width	W	S * 2	292mm	1mm
		Inch		
		minimum	maximum	increments
screw size	S	#6	1"	
length	L	S * 8	11.500"	1/16"
width	W	S * 2	11.500"	1/16"

Individual shim number example

RM16-250-2000-500-1A

Shim pack number example

RS16-M8-M64-M16-2A3B2C1D



STYLE 17 How to order -- R[Material]17 - [S] - [L] - [W] - [Thickness]

See below for Material and Thickness choices

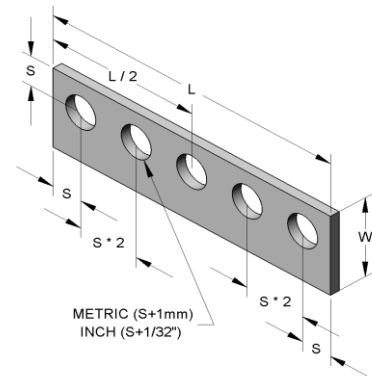
		Metric		
		minimum	maximum	increments
screw size	S	1.6mm	24mm	
length	L	S * 10	292mm	1mm
width	W	S * 2	292mm	1mm
		Inch		
		minimum	maximum	increments
screw size	S	#6	1"	
length	L	S * 10	11.500"	1/16"
width	W	S * 2	11.500"	1/16"

Individual shim number example

RM17-250-2500-500-1A

Shim pack number example

RS17-M6-M60-M12-2A3B2C1D



STYLE 23 How to order -- R[Material]23 - [S] - [L] - [W] - [Thickness]

See below for Material and Thickness choices

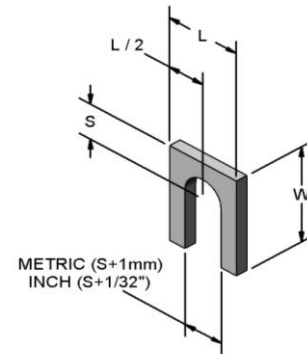
		Metric		
		minimum	maximum	increments
screw size	S	1.6mm	24mm	
length	L	S * 2	292mm	1mm
width	W	S * 2	290mm	1mm
		Inch		
		minimum	maximum	increments
screw size	S	#6	1"	
length	L	S * 2	11.500"	1/16"
width	W	S * 2	11.500"	1/16"

Individual shim number example

RM23-250-500-500-1A

Shim pack number example

RS23-M6-M12-M12-2A3B2C1D



Material choices

- S** - 300 series stainless steel - plain
- M** - 1010 full hard steel - oiled, non plated

Thickness choices

Letter	A	B	C	D	E	J	K	L
Nominal	1/8 mm	1/4 mm	1/2 mm	1 mm	2 mm	1/64"	1/32"	1/16"
1010 Full Hard (oiled, not plated)								
Actual	.005"	.010"	.020"	.040"	.079"	.015"	.031"	.062"
Tolerance	± .0005	± .00075	± .003	± .0004	± .005	± .002	± .0015	± .005
300 series Stainless Steel (could be slightly magnetic)								
Actual	.005"	.010"	.020"	.042"	.075"	.015"	.031"	.060"
Tolerance	± .00024	± .00035	± .0005	± .0006	± .0004	± .00043	± .0006	± .003



RAPid Shims - Screw Defined

STYLE 24 How to order -- R[Material]24 - [S] - [L] - [W] - [Thickness]

See below for Material and Thickness choices

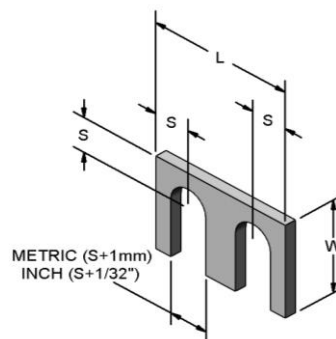
		Metric		
		minimum	maximum	increments
screw size	S	1.6mm	24mm	
length	L	S * 4	292mm	1mm
width	W	S * 2	290mm	1mm
		Inch		
		minimum	maximum	increments
screw size	S	#6	1"	
length	L	S * 4	11.500"	1/16"
width	W	S * 2	11.500"	1/16"

Individual shim number example

RM24-250-1000-500-1C

Shim pack number example

RS24-M6-M24-M12-2A3B2C1D



STYLE 25 How to order -- R[Material]25 - [S] - [L] - [W] - [Thickness]

See below for Material and Thickness choices

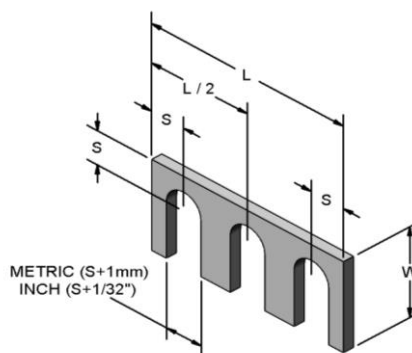
		Metric		
		minimum	maximum	increments
screw size	S	1.6mm	24mm	
length	L	S * 6	292mm	1mm
width	W	S * 2	290mm	1mm
		Inch		
		minimum	maximum	increments
screw size	S	#6	1"	
length	L	S * 6	11.500"	1/16"
width	W	S * 2	11.500"	1/16"

Individual shim number example

RM25-250-1500-1000-1A

Shim pack number example

RS25-M6-M36-M12-2A3B2C1D



Material choices

- S** - 300 series stainless steel - plain
M - 1010 full hard steel - oiled, non plated

Thickness choices

Letter	A	B	C	D	E	J	K	L
Nominal	1/8 mm	1/4 mm	1/2 mm	1 mm	2 mm	1/64"	1/32"	1/16"
1010 Full Hard (oiled, not plated)								
Actual	.005"	.010"	.020"	.040"	.079"	.015"	.031"	.062"
Tolerance	± .0005	± .00075	± .003	± .0004	± .005	± .002	± .0015	± .005
300 series Stainless Steel (could be slightly magnetic)								
Actual	.005"	.010"	.020"	.042"	.075"	.015"	.031"	.060"
Tolerance	± .00024	± .00035	± .0005	± .0006	± .0004	± .00043	± .0006	± .003



RENTAPEN LLC.

RAPid Tooling Components (RTC)

4 - 15

RAPid Shims - Screw Defined

STYLE 26 How to order -- R[Material]26 - [S] - [L] - [W] - [Thickness]

See below for Material and Thickness choices

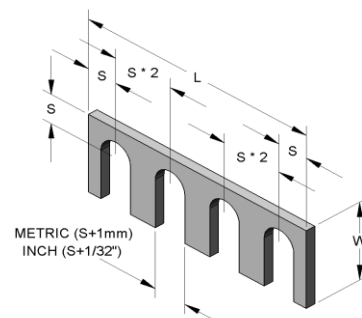
		Metric		
		minimum	maximum	increments
screw size	S	1.6mm	24mm	
length	L	S * 8	292mm	1mm
width	W	S * 2	292mm	1mm
		Inch		
		minimum	maximum	increments
screw size	S	#6	1"	
length	L	S * 8	11.500"	1/16"
width	W	S * 2	11.500"	1/16"

Individual shim number example

RM26-250-2000-500-1A

Shim pack number example

RS26-M6-M48-M12-2A3B2C1D



STYLE 27 How to order -- R[Material]27 - [S] - [L] - [W] - [Thickness]

See below for Material and Thickness choices

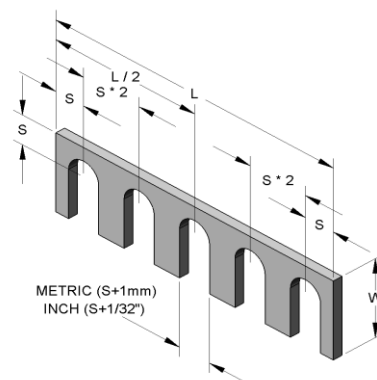
		Metric		
		minimum	maximum	increments
screw size	S	1.6mm	24mm	
length	L	S * 10	292mm	1mm
width	W	S * 2	292mm	1mm
		Inch		
		minimum	maximum	increments
screw size	S	#6	1"	
length	L	S * 10	11.500"	1/16"
width	W	S * 2	11.500"	1/16"

Individual shim number example

RM27-250-2500-500-1A

Shim pack number example

RS27-M6-M60-M12-2A3B2C1D



Material choices

- S** - 300 series stainless steel - plain
M - 1010 full hard steel - oiled, non plated

Thickness choices

Letter	A	B	C	D	E	J	K	L
Nominal	1/8 mm	1/4 mm	1/2 mm	1 mm	2 mm	1/64"	1/32"	1/16"
1010 Full Hard (oiled, not plated)								
Actual	.005"	.010"	.020"	.040"	.079"	.015"	.031"	.062"
Tolerance	± .0005	± .00075	± .003	± .0004	± .005	± .002	± .0015	± .005
300 series Stainless Steel (could be slightly magnetic)								
Actual	.005"	.010"	.020"	.042"	.075"	.015"	.031"	.060"
Tolerance	± .00024	± .00035	± .0005	± .0006	± .0004	± .00043	± .0006	± .003



RAPid Shims - Width Defined

STYLE 08 How to order -- R[Material]08 - [S] - [L] - [W] - [Thickness]

See below for Material and Thickness choices

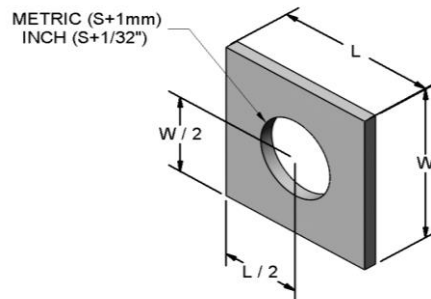
		Metric		
		minimum	maximum	increments
screw size	S	1.6mm	24mm	
length	L	S * 2	292mm	1mm
width	W	S * 2	290mm	1mm
		Inch		
		minimum	maximum	increments
screw size	S	#6	1"	
length	L	S * 2	11.500"	1/16"
width	W	S * 2	11.500"	1/16"

Individual shim number example

RM08-250-500-500-1A

Shim pack number example

RS08-M6-M12-M12-2A3B2C1D



STYLE 09 How to order -- R[Material]09 - [S] - [L] - [W] - [Thickness]

See below for Material and Thickness choices

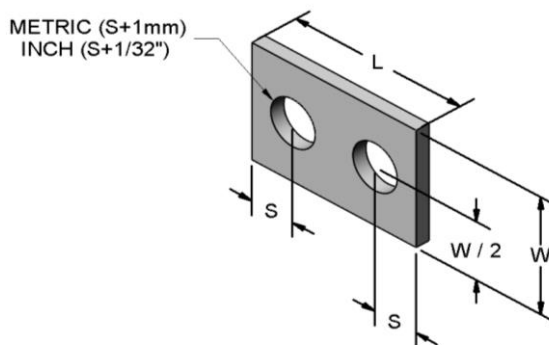
		Metric		
		minimum	maximum	increments
screw size	S	1.6mm	24mm	
length	L	S * 4	292mm	1mm
width	W	S * 2	290mm	1mm
		Inch		
		minimum	maximum	increments
screw size	S	#6	1"	
length	L	S * 4	11.500"	1/16"
width	W	S * 2	11.500"	1/16"

Individual shim number example

RM09-250-1000-500-1A

Shim pack number example

RS09-M6-M24-M12-2A3B2C1D



STYLE 10 How to order -- R[Material]10 - [S] - [L] - [W] - [Thickness]

See below for Material and Thickness choices

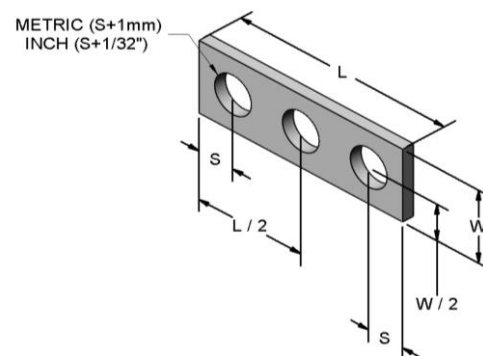
		Metric		
		minimum	maximum	increments
screw size	S	1.6mm	24mm	
length	L	S * 6	292mm	1mm
width	W	S * 2	290mm	1mm
		Inch		
		minimum	maximum	increments
screw size	S	#6	1"	
length	L	S * 6	11.500"	1/16"
width	W	S * 2	11.500"	1/16"

Individual shim number example

RM10-250-1500-500-1A

Shim pack number example

RS10-M6-M36-M12-2A3B2C1D



Material choices

- S** - 300 series stainless steel - plain
M - 1010 full hard steel - oiled, non plated

Thickness choices

Letter	A	B	C	D	E	J	K	L
Nominal	1/8 mm	1/4 mm	1/2 mm	1 mm	2 mm	1/64"	1/32"	1/16"
1010 Full Hard (oiled, not plated)								
Actual	.005"	.010"	.020"	.040"	.079"	.015"	.031"	.062"
Tolerance	± .0005	± .00075	± .003	± .0004	± .005	± .002	± .0015	± .005
300 series Stainless Steel (could be slightly magnetic)								
Actual	.005"	.010"	.020"	.042"	.075"	.015"	.031"	.060"
Tolerance	± .00024	± .00035	± .0005	± .0006	± .0004	± .00043	± .0006	± .003



RENTAPEN LLC.

RAPid Tooling Components (RTC)

4 - 17

RAPid Shims - Width Defined

STYLE 11 How to order -- R[Material]11 - [S] - [L] - [W] - [Thickness]

See below for Material and Thickness choices

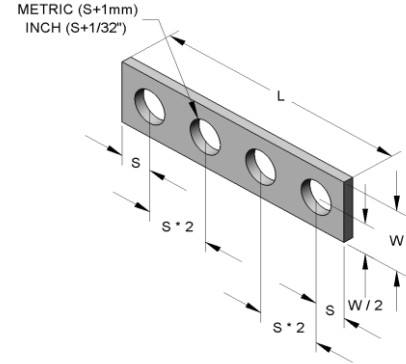
		Metric		
		minimum	maximum	increments
screw size	S	1.6mm	24mm	
length	L	S * 8	292mm	1mm
width	W	S * 2	292mm	1mm
		Inch		
		minimum	maximum	increments
screw size	S	#0	1"	
length	L	S * 8	11.500"	1/16"
width	W	S * 2	11.500"	1/16"

Individual shim number example

RM11-250-2000-500-1A

Shim pack number example

RS11-M6-M48-M12-2A3B2C1D



STYLE 12 How to order -- R[Material]12 - [S] - [L] - [W] - [Thickness]

See below for Material and Thickness choices

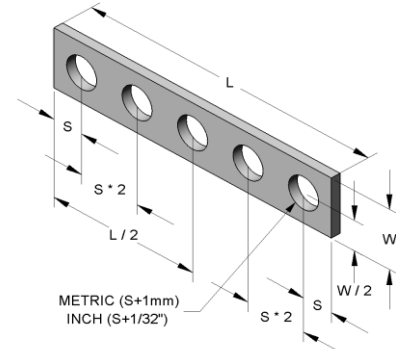
		Metric		
		minimum	maximum	increments
screw size	S	1.6mm	24mm	
length	L	S * 10	292mm	1mm
width	W	S * 2	292mm	1mm
		Inch		
		minimum	maximum	increments
screw size	S	#6	1"	
length	L	S * 10	11.500"	1/16"
width	W	S * 2	11.500"	1/16"

Individual shim number example

RM12-250-2500-500-1A

Shim pack number example

RS12-M6-M60-M12-2A3B2C1D



STYLE 18 How to order -- R[Material]18 - [S] - [L] - [W] - [Thickness]

See below for Material and Thickness choices

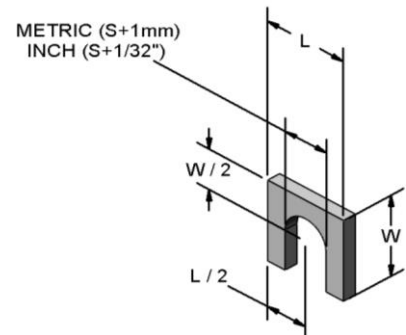
		Metric		
		minimum	maximum	increments
screw size	S	1.6mm	24mm	
length	L	S * 2	292mm	1mm
width	W	S * 2	290mm	1mm
		Inch		
		minimum	maximum	increments
screw size	S	#6	1"	
length	L	S * 2	11.500"	1/16"
width	W	S * 2	11.500"	1/16"

Individual shim number example

RM18-250-500-500-1A

Shim pack number example

RS18-M6-M12-M12-2A3B2C1D



Material choices

- S** - 300 series stainless steel - plain
- M** - 1010 full hard steel - oiled, non plated

Thickness choices

Letter	A	B	C	D	E	J	K	L
Nominal	1/8 mm	1/4 mm	1/2 mm	1 mm	2 mm	1/64"	1/32"	1/16"
1010 Full Hard (oiled, not plated)								
Actual	.005"	.010"	.020"	.040"	.079"	.015"	.031"	.062"
Tolerance	± .0005	± .00075	± .003	± .0004	± .005	± .002	± .0015	± .005
300 series Stainless Steel (could be slightly magnetic)								
Actual	.005"	.010"	.020"	.042"	.075"	.015"	.031"	.060"
Tolerance	± .00024	± .00035	± .0005	± .0006	± .0004	± .00043	± .0006	± .003



RAPid Shims - Width Defined

STYLE 19 How to order -- R[Material]19 - [S] - [L] - [W] - [Thickness]

See below for Material and Thickness choices

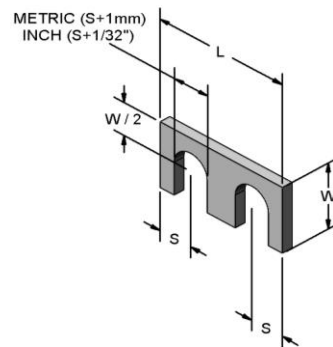
		Metric		
		minimum	maximum	increments
screw size	S	1.6mm	24mm	
length	L	S * 4	292mm	1mm
width	W	S * 2	290mm	1mm
		Inch		
		minimum	maximum	increments
screw size	S	#6	1"	
length	L	S * 4	11.500"	1/16"
width	W	S * 2	11.500"	1/16"

Individual shim number example

RM19-250-1000-500-1A

Shim pack number example

RS19-M6-M24-M12-2A3B2C1D



STYLE 20 How to order -- R[Material]20 - [S] - [L] - [W] - [Thickness]

See below for Material and Thickness choices

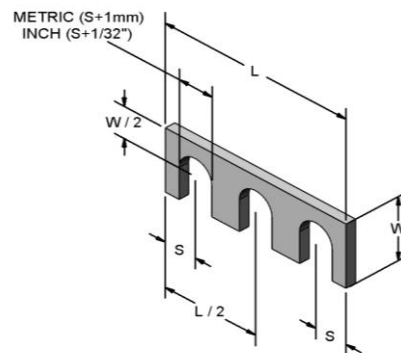
		Metric		
		minimum	maximum	increments
screw size	S	1.6mm	24mm	
length	L	S * 6	292mm	1mm
width	W	S * 2	292mm	1mm
		Inch		
		minimum	maximum	increments
screw size	S	#6	1"	
length	L	S * 6	11.500"	1/16"
width	W	S * 2	11.500"	1/16"

Individual shim number example

RM20-250-1500-500-1A

Shim pack number example

RS20-M6-M36-M12-2A3B2C1D



STYLE 21 How to order -- R[Material]21 - [S] - [L] - [W] - [Thickness]

See below for Material and Thickness choices

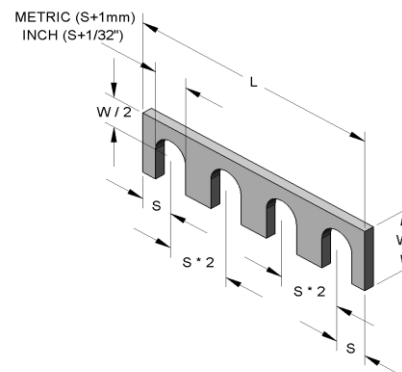
		Metric		
		minimum	maximum	increments
screw size	S	1.6mm	24mm	
length	L	S * 8	292mm	1mm
width	W	S * 2	292mm	1mm
		Inch		
		minimum	maximum	increments
screw size	S	#6	1"	
length	L	S * 8	11.500"	1/16"
width	W	S * 2	11.500"	1/16"

Individual shim number example

RM21-250-2000-500-1A

Shim pack number example

RS21-M6-M48-M12-2A3B2C1D



Material choices

- S** - 300 series stainless steel - plain
M - 1010 full hard steel - oiled, non plated

Thickness choices

Letter	A	B	C	D	E	J	K	L
Nominal	1/8 mm	1/4 mm	1/2 mm	1 mm	2 mm	1/64"	1/32"	1/16"
1010 Full Hard (oiled, not plated)								
Actual	.005"	.010"	.020"	.040"	.079"	.015"	.031"	.062"
Tolerance	± .0005	± .00075	± .003	± .0004	± .005	± .002	± .0015	± .005
300 series Stainless Steel (could be slightly magnetic)								
Actual	.005"	.010"	.020"	.042"	.075"	.015"	.031"	.060"
Tolerance	± .00024	± .00035	± .0005	± .0006	± .0004	± .00043	± .0006	± .003



RAPid Shims - Width Defined

STYLE 22 How to order -- R[Material]22- [S] - [L] - [W] - [Thickness]

See below for Material and Thickness choices

		Metric		
		minimum	maximum	increments
screw size	S	1.6mm	24mm	
length	L	S * 10	292mm	1mm
width	W	S * 2	292mm	1mm

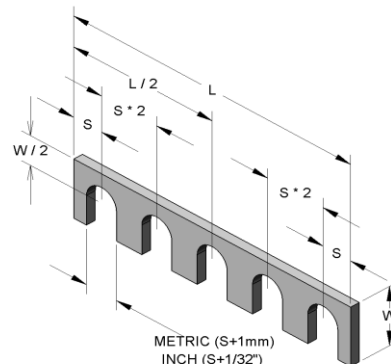
		Inch		
		minimum	maximum	increments
screw size	S	#6	1"	
length	L	S * 10	11.500"	1/16"
width	W	S * 2	11.500"	1/16"

Individual shim number example

RM22-250-2500-500-1A

Shim pack number example

RS22-M6-M60-M12-2A3B2C1D



STYLE 34 How to order -- R[Material]34 - [S] - [L] - [W] - [D] - [Thickness]

See below for Material and Thickness choices

		Metric		
		minimum	maximum	increments
screw size	S	1.6mm	24mm	
length	L	S * 4	292mm	1mm
width	W	S * 2	292mm	1mm
distance	D	S * 2	L - (S * 2)	0.1mm

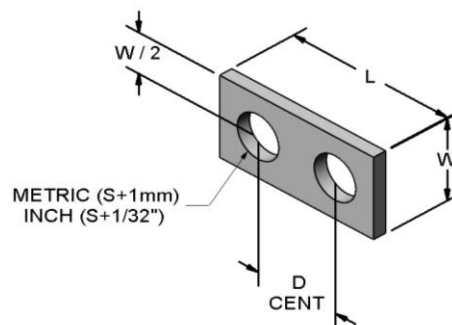
		Inch		
		minimum	maximum	increments
screw size	S	#6	1"	
length	L	S * 4	11.500"	1/16"
width	W	S * 2	11.500"	1/16"
distance	D	S * 2	L - (S * 2)	0.001"

Individual shim number example

RM34-250-1000-500-500-1A

Shim pack number example

RS34-M6-M24-M12-M12-2A3B2C1D



STYLE 35 How to order -- R[Material]35 - [S] - [L] - [W] - [D] - [Thickness]

See below for Material and Thickness choices

		Metric		
		minimum	maximum	increments
screw size	S	1.6mm	24mm	
length	L	S * 4	292mm	1mm
width	W	S * 2	290mm	1mm
distance	D	S * 2	L - (S * 2)	0.1mm

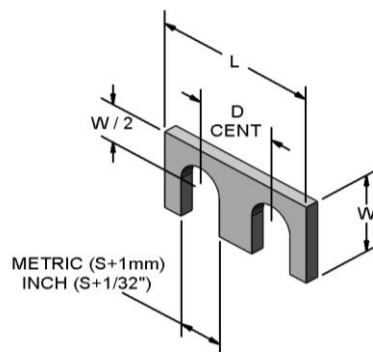
		Inch		
		minimum	maximum	increments
screw size	S	#6	1"	
length	L	S * 4	11.500"	1/16"
width	W	S * 2	11.500"	1/16"
distance	D	S * 2	L - (S * 2)	0.001"

Individual shim number example

RM35-250-1000-500-500-1A

Shim pack number example

RS35-M6-M24-M12-M12-2A3B2C1D



Material choices

- S** - 300 series stainless steel - plain
- M** - 1010 full hard steel - oiled, non plated

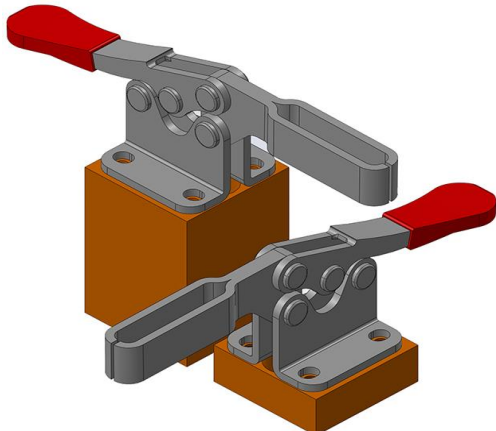
Thickness choices

Letter	A	B	C	D	E	J	K	L
Nominal	1/8 mm	1/4 mm	1/2 mm	1 mm	2 mm	1/64"	1/32"	1/16"
1010 Full Hard (oiled, not plated)								
Actual	.005"	.010"	.020"	.040"	.079"	.015"	.031"	.062"
Tolerance	± .0005	± .00075	± .003	± .0004	± .005	± .002	± .0015	± .005
300 series Stainless Steel (could be slightly magnetic)								
Actual	.005"	.010"	.020"	.042"	.075"	.015"	.031"	.060"
Tolerance	± .00024	± .00035	± .0005	± .0006	± .0004	± .00043	± .0006	± .003



RAPid Risers

How to order -- **RR00** - Pre-defined - *[H]* - *[C]* - *[M]*



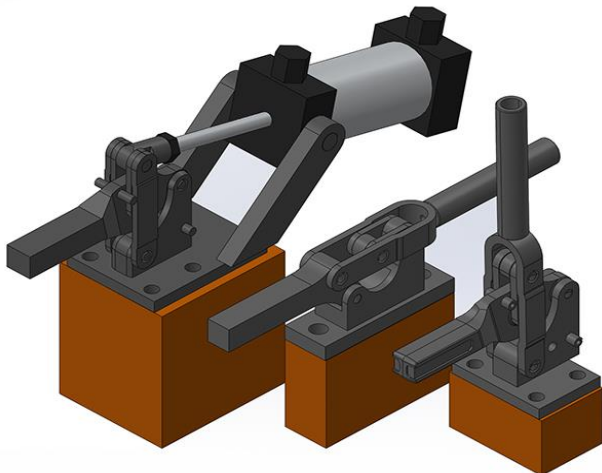
Standard Rentapen Risers Using
Rentapen Part Numbers Matched to
Customer Clamp Model

Part number example for ordering a riser:

Carr-Lane: RR00-312-4000-003-S
De-Sta-Co: RR00-312-3000-015-A
Essentra Comp: RR00-312-250-011-3
TE-CO: RR00-375-1000-007-S
All-American: RR00-250-1000-004-A
Jergens: RR00-312-2500-019-3

(Clamp Vendor)	(Height) H		(Clamp Model) C	(Material) M
Carr-Lane De-Sta-Co Essentra Comp TE-CO All-American Jergens	Minimum = 0.250" Maximum = 4.000"		See Spec Sheet	S 1018 CRS A Aluminum 3 300 Stainless

How to order -- **RR01** - *[C]* - *[H]* - *[M]*



Standard Rentapen Risers Using
Wolverine Part Number in the
Rentapen Part Number

Part number example for ordering a riser:

RR01-A-1905-3000-S
RR01-CQ-905A-4000-A
RR01-C-305A-250-3

(Clamp Vendor)	(Wolverine Model) C	(De-Sta-Co Model) C	(Height) H	(Material) M
Wolverine	A-1905	*	Minimum = 0.250" Maximum = 4.000"	S 1018 CRS A Aluminum 3 300 Stainless
	A-1910	*		
	A-1915	*		
	C-305A	5305		
	C-310A	5310		
	CQ-905A	5905		
	CQ-910A	5910		
	CQ-915A	5915		
De-Sta-Co		5131		



RAPid Risers

for Carr Lane	Use this riser
CL-1000-PTC	RR00-312-xxx-003
CL-1000-VCC	RR00-375-xxx-009
CL-1001-PTC	RR00-312-xxx-003
CL-100-HVTC	RR00-312-xxx-001
CL-100-PC	RR00-312-xxx-012
CL-100-SPC	RR00-375-xxx-003
CL-101-TC	RR00-312-xxx-015
CL-103-TC	RR00-312-xxx-015
CL-111-TC	RR00-312-xxx-015
CL-113-TC	RR00-312-xxx-015
CL-11-TC	RR00-250-xxx-004
CL-1500-PPC	RR00-375-xxx-010
CL-150-HTC	RR00-250-xxx-004
CL-150-SPC	RR00-312-xxx-023
CL-150-VTC	RR00-312-xxx-011
CL-151-TC	RR00-312-xxx-014
CL-152-VTC	RR00-312-xxx-011
CL-2000-PTC	RR00-375-xxx-007
CL-2001-PTC	RR00-375-xxx-007
CL-200-PC	RR00-375-xxx-010
CL-200-VTC	RR00-250-xxx-004
CL-201-TC	RR00-312-xxx-003
CL-203-TC	RR00-312-xxx-003
CL-211-TC	RR00-312-xxx-003
CL-213-TC	RR00-312-xxx-003
CL-21-TC	RR00-312-xxx-020
CL-250-HTC	RR00-250-xxx-004
CL-250-SPC	RR00-375-xxx-010
CL-250-VTC	RR00-312-xxx-015
CL-251-TC	RR00-312-xxx-002
CL-252-VTC	RR00-312-xxx-015
CL-253-VTC	RR00-312-xxx-015
CL-255-SPC	RR00-375-xxx-010
CL-260-HTC	RR00-250-xxx-002
CL-275-SPC	RR00-375-xxx-010
CL-285-SPC	RR00-375-xxx-010
CL-300-HTC	RR00-312-xxx-016
CL-300-HVTC	RR00-375-xxx-002
CL-300-PC	RR00-375-xxx-012
CL-301-TC	RR00-375-xxx-006
CL-303-TC	RR00-375-xxx-006
CL-311-TC	RR00-375-xxx-006
CL-313-TC	RR00-375-xxx-006
CL-350-HTC	RR00-312-xxx-016
CL-350-VTC	RR00-312-xxx-003
CL-351-TC	RR00-375-xxx-004
CL-352-VTC	RR00-312-xxx-003
CL-353-VTC	RR00-312-xxx-003
CL-400-PTC	RR00-312-xxx-011
CL-450-HTC	RR00-312-xxx-006
CL-450-VTC	RR00-312-xxx-003
CL-452-VTC	RR00-312-xxx-003
CL-453-VTC	RR00-312-xxx-003
CL-500-PTC	RR00-312-xxx-015
CL-50-SPC	RR00-250-xxx-006
CL-51-SPC	RR00-250-xxx-006
CL-51-TC	RR00-250-xxx-004
CL-53-TC	RR00-250-xxx-004
CL-550-AHTC	RR00-375-xxx-005
CL-550-HTC	RR00-375-xxx-010
CL-550-VTC	RR00-375-xxx-007
CL-552-VTC	RR00-375-xxx-007
CL-600-HTC	RR00-375-xxx-014
CL-600-PPC	RR00-250-xxx-006
CL-600-VTC	RR00-312-xxx-010
CL-650-ATC	RR00-375-xxx-007
CL-650-HTC	RR00-375-xxx-014
CL-650-VTC	RR00-375-xxx-007
CL-652-VTC	RR00-375-xxx-007
CL-750-VTC	RR00-375-xxx-007
CL-850-VTC	RR00-375-xxx-007

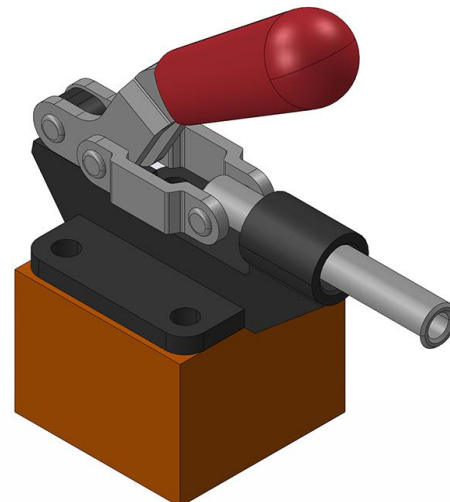
for De-Sta-Co	Use this riser
201	RR00-312-xxx-011
202	RR00-312-xxx-015
205	RR00-250-xxx-004
206	RR00-250-xxx-004
207	RR00-312-xxx-003
210	RR00-375-xxx-007
213	RR00-250-xxx-005
215	RR00-312-xxx-016
217	RR00-312-xxx-018
220	RR00-312-xxx-010
225	RR00-312-xxx-006
227	RR00-312-xxx-008
229	RR00-375-xxx-001
235	RR00-375-xxx-010
237	RR00-375-xxx-011
240	RR00-375-xxx-013
245	RR00-375-xxx-014
247	RR00-375-xxx-007
305	RR00-250-xxx-004
307	RR00-312-xxx-005
309	RR00-375-xxx-008
516	RR00-312-xxx-007
518	RR00-312-xxx-006
601	RR00-250-xxx-006
603	RR00-312-xxx-013
605	RR00-312-xxx-023
608	RR00-375-xxx-010
610	RR00-375-xxx-010
615	RR00-312-xxx-023
620	RR00-375-xxx-010
802	RR00-312-xxx-015
803	RR00-312-xxx-013
807	RR00-312-xxx-003
810	RR00-375-xxx-007
812	RR00-312-xxx-011
816	RR00-250-xxx-006
6001	RR00-250-xxx-003

for Essentra	Use this riser
TC-201	RR00-312-xxx-011
TC-202	RR00-312-xxx-015
TC-205	RR00-250-xxx-004
TC-206	RR00-250-xxx-004
TC-207	RR00-312-xxx-003
TC-210	RR00-375-xxx-007
TC-213	RR00-250-xxx-005
TC-215	RR00-312-xxx-016
TC-217	RR00-312-xxx-018
TC-225	RR00-312-xxx-006
TC-227	RR00-312-xxx-008
TC-229	RR00-375-xxx-001
TC-247	RR00-375-xxx-007
TC-305	RR00-250-xxx-004
TC-518	RR00-312-xxx-006
TC-601	RR00-250-xxx-006
TC-603	RR00-312-xxx-013
TC-6001	RR00-250-xxx-003

for TE-CO	Use this riser
34010	RR00-312-xxx-015
34012	RR00-312-xxx-015
34020	RR00-312-xxx-003
34022	RR00-312-xxx-003
34023	RR00-312-xxx-003
34025	RR00-312-xxx-003
34030	RR00-375-xxx-007
34035	RR00-375-xxx-007
34040	RR00-375-xxx-007
34041	RR00-375-xxx-007
34069	RR00-250-xxx-004
34081	RR00-312-xxx-020
34087	RR00-375-xxx-006
34101	RR00-250-xxx-006
34105	RR00-250-xxx-006
34110	RR00-312-xxx-009
34120	RR00-312-xxx-006
34130	RR00-375-xxx-015
34305	RR00-250-xxx-006
34310	RR00-312-xxx-023
34320	RR00-375-xxx-010
34325	RR00-375-xxx-010
34340	RR00-312-xxx-012
34350	RR00-375-xxx-010
34360	RR00-375-xxx-012

for All American	Use this riser
80-010	RR00-250-xxx-004
80-012	RR00-250-xxx-004
80-020	RR00-312-xxx-016
80-030	RR00-312-xxx-006
80-040	RR00-375-xxx-010
80-100	RR00-312-xxx-011
80-102	RR00-312-xxx-011
80-105	RR00-250-xxx-004
80-110	RR00-312-xxx-015
80-112	RR00-312-xxx-015
80-121	RR00-312-xxx-003
80-123	RR00-312-xxx-003
80-125	RR00-312-xxx-003
80-127	RR00-312-xxx-003
80-132	RR00-375-xxx-007
80-133	RR00-375-xxx-007
80-140	RR00-375-xxx-007
80-141	RR00-375-xxx-007
80-202	RR00-250-xxx-006
80-210	RR00-312-xxx-021
80-220	RR00-375-xxx-010
80-230	RR00-312-xxx-023
80-240	RR00-375-xxx-010

for Jergens	Use this riser
70210	RR00-250-xxx-006
70230	RR00-250-xxx-006
70240	RR00-312-xxx-019
70250	RR00-312-xxx-006
70260	RR00-250-xxx-005
70262	RR00-312-xxx-017
70264	RR00-375-xxx-016
70270	RR00-375-xxx-010
70280	RR00-250-xxx-001
70310	RR00-312-xxx-011
70320	RR00-312-xxx-011
70330	RR00-312-xxx-015
70340	RR00-312-xxx-015
70342	RR00-312-xxx-015
70350	RR00-312-xxx-003
70360	RR00-312-xxx-003
70365	RR00-312-xxx-003
70380	RR00-312-xxx-003
70390	RR00-312-xxx-003
70395	RR00-312-xxx-003
70420	RR00-375-xxx-007
70430	RR00-375-xxx-007
70440	RR00-375-xxx-007
70450	RR00-375-xxx-007
70460	RR00-375-xxx-007
70470	RR00-375-xxx-007
70810	RR00-312-xxx-012
70818	RR00-250-xxx-003
70820	RR00-312-xxx-023
70830	RR00-375-xxx-010
70840	RR00-375-xxx-010
70850	RR00-375-xxx-012
72160	RR00-312-xxx-022
72161	RR00-312-xxx-003
72162	RR00-375-xxx-006



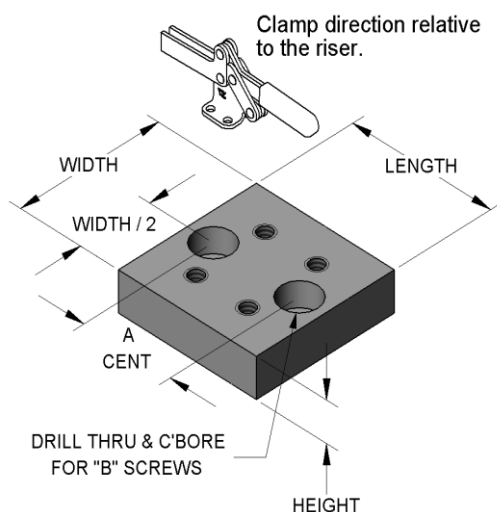


RENTAPEN LLC.

RAPid Tooling Components (RTC)

5 - 3

RAPid Risers



Replace XXX with height desired

minimum .250" maximum 4.000"

RTC Number	A	B	Width	Length	Tap
RR00-250-xxx-001	1.000	1/4	1.500	1.500	#10-24
RR00-250-xxx-002	1.000	1/4	1.500	1.500	#10-24
RR00-250-xxx-003	1.500	1/4	2.000	2.000	#10-24
RR00-250-xxx-004	1.000	1/4	1.500	1.500	#8-32
RR00-250-xxx-005	1.000	1/4	1.500	1.500	#8-32
RR00-250-xxx-006	1.000	1/4	1.500	1.500	#8-32
RR00-312-xxx-001	1.375	5/16	2.000	2.000	1/4-20
RR00-312-xxx-002	0.875	5/16	1.500	1.500	1/4-20
RR00-312-xxx-003	1.375	5/16	2.000	2.000	1/4-20
RR00-312-xxx-005	1.375	5/16	2.000	2.000	1/4-20
RR00-312-xxx-006	0.875	5/16	1.500	1.500	1/4-20
RR00-312-xxx-007	1.375	5/16	2.000	2.000	1/4-20
RR00-312-xxx-008	1.375	5/16	2.000	2.000	1/4-20
RR00-312-xxx-009	0.875	5/16	1.500	1.500	1/4-20
RR00-312-xxx-010	1.375	5/16	2.000	2.000	1/4-20
RR00-312-xxx-011	0.875	5/16	1.500	1.500	#8-32
RR00-312-xxx-012	1.875	5/16	2.500	2.500	1/4-20
RR00-312-xxx-013	1.375	5/16	2.000	2.000	1/4-20
RR00-312-xxx-014	0.875	5/16	1.500	1.500	#10-24
RR00-312-xxx-015	0.875	5/16	1.500	1.500	#10-24
RR00-312-xxx-016	0.875	5/16	1.500	1.500	#10-24
RR00-312-xxx-017	0.875	5/16	1.500	1.500	#10-24
RR00-312-xxx-018	1.375	5/16	2.000	2.000	#10-24
RR00-312-xxx-019	0.875	5/16	1.500	1.500	#10-24
RR00-312-xxx-020	0.875	5/16	1.500	1.500	#8-32
RR00-312-xxx-021	1.875	5/16	2.500	2.500	#10-24
RR00-312-xxx-022	0.875	5/16	1.500	1.500	#6-32
RR00-312-xxx-023	2.125	5/16	2.750	2.750	#10-24
RR00-375-xxx-001	2.000	3/8	2.750	2.750	5/16-18
RR00-375-xxx-002	2.000	3/8	2.750	2.750	5/16-18
RR00-375-xxx-003	1.750	3/8	2.500	2.500	#10-24
RR00-375-xxx-004	1.750	3/8	2.500	2.500	5/16-18
RR00-375-xxx-005	1.750	3/8	2.500	2.500	5/16-18
RR00-375-xxx-006	1.750	3/8	2.500	2.500	5/16-18
RR00-375-xxx-007	2.000	3/8	2.750	2.750	5/16-18
RR00-375-xxx-008	2.000	3/8	2.750	2.750	5/16-18
RR00-375-xxx-009	1.750	3/8	2.500	2.500	5/16-18
RR00-375-xxx-010	1.750	3/8	2.500	2.500	5/16-18
RR00-375-xxx-011	1.750	3/8	2.500	2.500	5/16-18
RR00-375-xxx-012	2.000	3/8	2.750	2.750	5/16-18
RR00-375-xxx-013	2.000	3/8	2.750	2.750	5/16-18
RR00-375-xxx-014	2.000	3/8	2.750	2.750	5/16-18
RR00-375-xxx-015	2.000	3/8	2.750	2.750	5/16-18
RR00-375-xxx-016	1.750	3/8	2.500	2.500	#10-24

Part number examples:

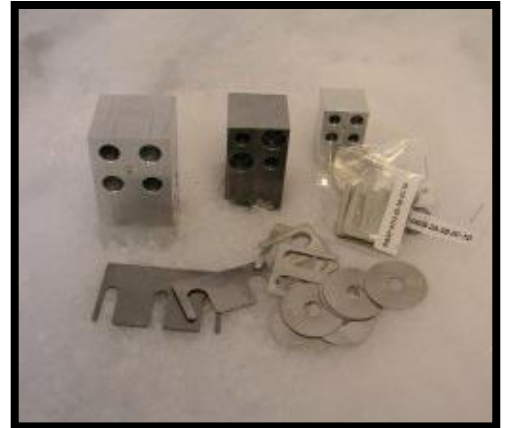
RR00-312-3000-003 3" tall riser for a De-Sta-Co 207 clamp

RR00-250-1500-006 1.5" tall riser for a Carr Lane CL-51-SPC clamp



The RTC Story

In 2000 all Rentapen did was design machines. We were designing a lot of production-part holding fixtures for welding and assembly processes. We found we were designing in the same blocks, plates and shims over and over again. One day we got a call from a customer. We had made a mistake on a detail of a block we had designed. The drawing image showed no hidden lines so a counter bore looked like it was coming from “this side”, but the call out for the hole did say, “OPP SIDE”. The customer was upset because they had made the block with the counter bore on the wrong side and it was going to cost them \$100 plus to make a new one.



We thought, “Hmmm, bet we could make it cheaper than that!”

So we standardized those blocks, plates and shims. Now that \$100 - \$120 block can be bought for about \$30 - \$60. Our RAPid Tooling Components™ save our customers hundreds and even thousands of dollars per fixture in design and build costs.

And because they are counter bored on both sides they are more versatile and detail mistakes like the one we made are eliminated.

As we have grown we have developed our automated **RAPid Order Processing System™** that saves money and reduces order errors by taking orders straight from the order confirmation to the laser to the packing slip in a few short steps.

Now **RAPid Tooling Components™** are the **standard** for quality fixture designs.

And that customer that called us about the error in 2000 has since instructed all their engineers and machine shop vendors that they must use **RAPid Tooling Components™** in their designs when possible. They see clearly that **RAPid Tooling Components™** save time, money, and reduce errors.

RAPID TRUNNIONS

A Quick & Easy Solution For Mounting Your Weld or Assembly Fixtures.



FEATURES:

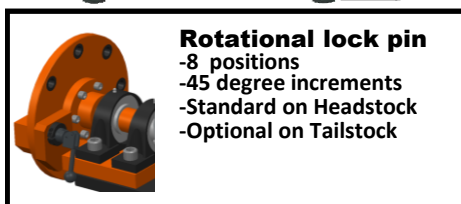
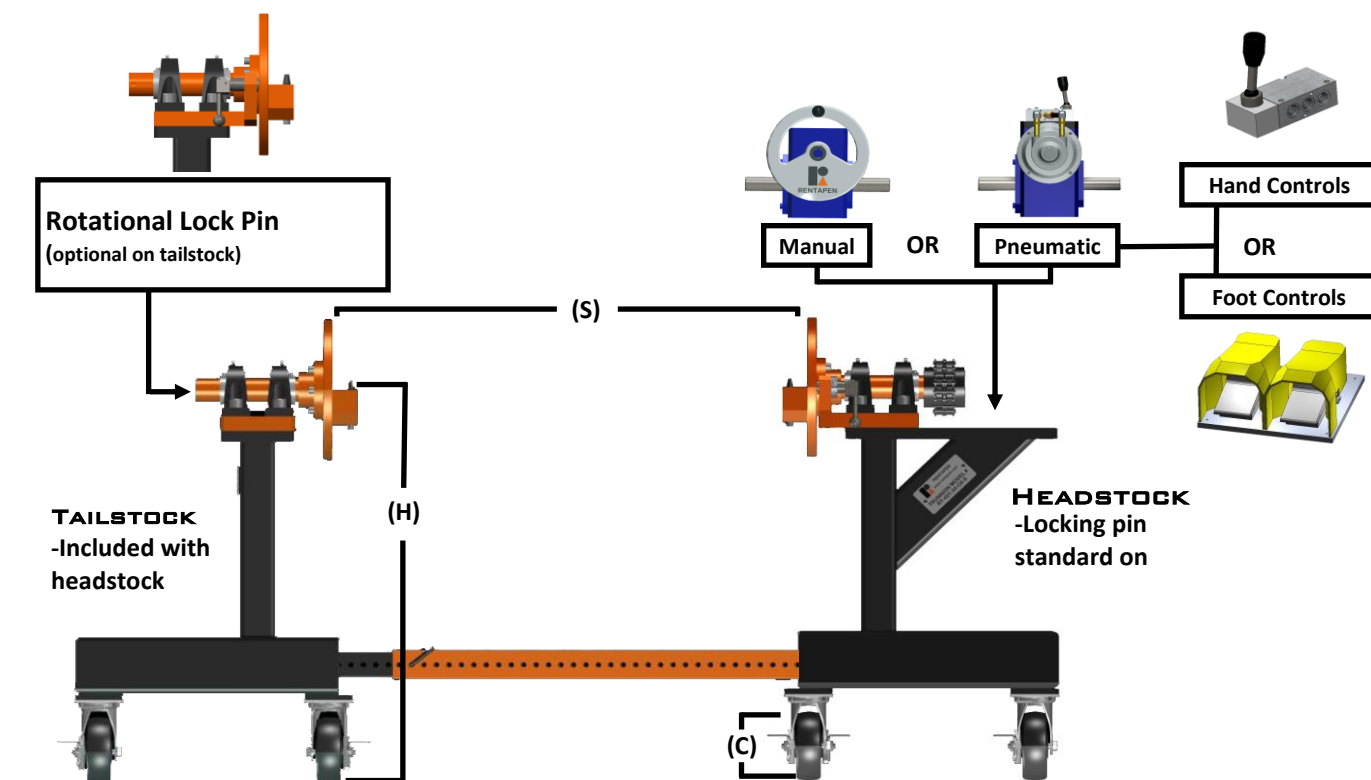
Portability - Casters allow for easy movement over most shop floor obstacles and both head and tailstock can be moved to position independently.

Safety - Positive locking system on headstock (tailstock Optional) prevents accidental or unwanted rotation.

Reliability - Industrial quality gearbox, heavy duty bearings and casters for years of service.

Convenience - 360° rotation allows for optimum part orientation. Double sided gearbox allows for reposition of hand crank.

Customizable - Choose from several available gear ratios, heights, and caster sizes. Even supply drawings for your own custom mounting or designs. Hydraulic and pneumatic motor options available on request.



BENEFITS:

- **Decreased Welder Fatigue**
- Increased Productivity
- Improved Weld Access
- Improved Weld Quality
- Weld Cell Flexibility

RAPID Trunnion					
How to order — RT7-G-H-C-L-S					
Gearbox ratio (G)	Height (H)	Caster (C)	Tailstock locking (L)	Controls (K)	Stability rail (Option) (S)
-Manual					
301 = 30:1	34	F = Floor Mount	Y= Yes	H = Hand	N = None
201 = 20:1	36	C4 = 4" Caster	N= No	F = Foot	XX = length
151 = 15:1	38	C6 = 6" Caster		Note:	
-Pneumatic	40				
P100 = 100:1	42			Controls not needed for manual	Note:
	48				Max = 20'

Additional Gearboxes, Heights, Casters, Locking and Stability system options are available upon request

Voice: (262) 395-4699

www.rentapen.com

Fax: (262) 439-9101