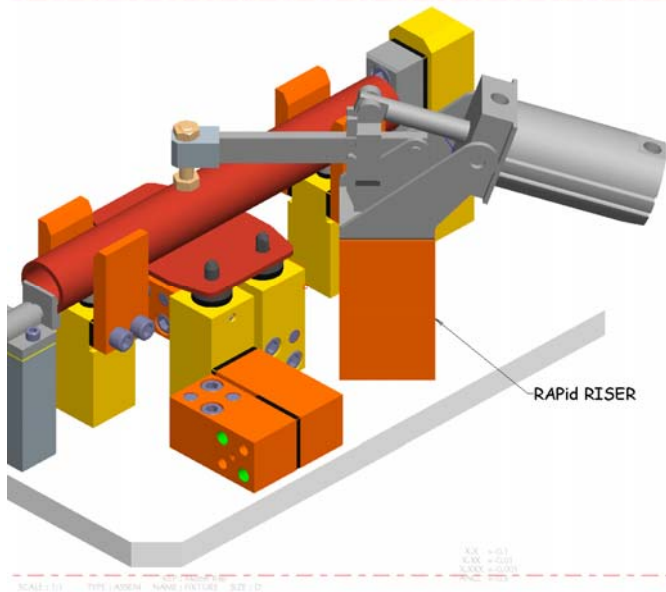


Put a RAPid Riser™ Under Your Clamp and SAVE

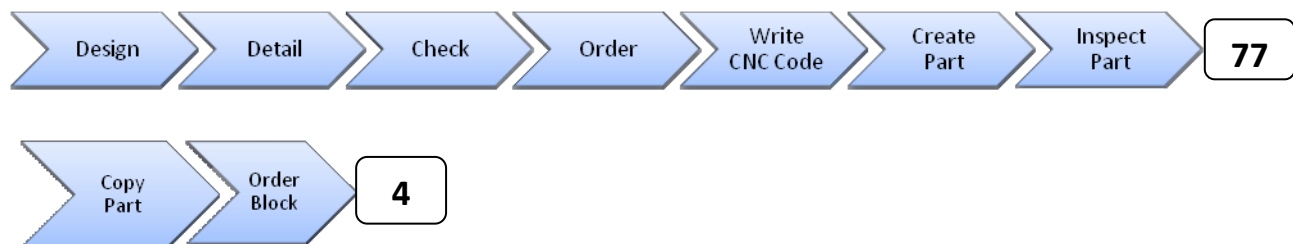


When designing and building fixtures, it is faster and cheaper to design with purchased products whenever possible.

Let's look at an example of using a purchased RAPid Riser™ vs. a block that you would have designed and manufactured.

MAKE YOUR OWN	minutes
Design Block	15
Detail Block	5
Check block	5
Order Stock	2
Cut Stock	5
Write CNC code for ends	15
Write CNC code for holes	15
Create Part on CNC	10
Inspect Part	5
Total Minutes	77
Labor Costs @45/hr*	\$ 57.75
Material Costs*	\$ 1.55
TOTAL COST	\$ 59.30

BUY RAPid BLOCK	minutes
Make a copy of library part	2
Order Block	2
Total Minutes	4
Labor Costs @45/hr*	\$ 3.00
RAPid Tooling Component™	\$ 35.00
TOTAL COST	\$ 38.00



TIME SAVED with (1) RAPid RISER™ = 73 Minutes
MONEY SAVED with (1) RAPid RISER™ = ~\$21.30



RENTAPEN INC.

RAPid Tooling Components (RTC)

Clamp Risers

for Carr Lane	Use this riser
CL-1000-PTC	RR00-312-xxx-003
CL-1000-VCC	RR00-375-xxx-009
CL-1001-PTC	RR00-312-xxx-003
CL-100-HVTC	RR00-312-xxx-001
CL-100-PC	RR00-312-xxx-012
CL-100-SPC	RR00-375-xxx-003
CL-101-TC	RR00-312-xxx-015
CL-103-TC	RR00-312-xxx-015
CL-111-TC	RR00-312-xxx-015
CL-113-TC	RR00-312-xxx-015
CL-11-TC	RR00-250-xxx-004
CL-1500-PPC	RR00-312-xxx-010
CL-150-HTC	RR00-250-xxx-004
CL-150-SPC	RR00-312-xxx-023
CL-150-VTC	RR00-312-xxx-011
CL-151-TC	RR00-312-xxx-014
CL-152-VTC	RR00-312-xxx-011
CL-2000-PTC	RR00-375-xxx-007
CL-2001-PTC	RR00-375-xxx-007
CL-200-PC	RR00-375-xxx-010
CL-200-VTC	RR00-250-xxx-004
CL-201-TC	RR00-312-xxx-003
CL-203-TC	RR00-312-xxx-003
CL-211-TC	RR00-312-xxx-003
CL-213-TC	RR00-312-xxx-003
CL-21-TC	RR00-312-xxx-020
CL-250-HTC	RR00-250-xxx-004
CL-250-SPC	RR00-375-xxx-010
CL-250-VTC	RR00-312-xxx-015
CL-251-TC	RR00-312-xxx-002
CL-252-VTC	RR00-312-xxx-015
CL-253-VTC	RR00-312-xxx-015
CL-255-SPC	RR00-375-xxx-010
CL-260-HTC	RR00-250-xxx-002
CL-275-SPC	RR00-375-xxx-010
CL-285-SPC	RR00-375-xxx-010
CL-300-HTC	RR00-312-xxx-016
CL-300-HVTC	RR00-375-xxx-002
CL-300-PC	RR00-375-xxx-012
CL-301-TC	RR00-375-xxx-006
CL-303-TC	RR00-375-xxx-006
CL-311-TC	RR00-375-xxx-006
CL-313-TC	RR00-375-xxx-006
CL-350-HTC	RR00-312-xxx-016
CL-350-VTC	RR00-312-xxx-003
CL-351-TC	RR00-375-xxx-004
CL-352-VTC	RR00-312-xxx-003
CL-353-VTC	RR00-312-xxx-003
CL-400-PTC	RR00-312-xxx-011
CL-450-HTC	RR00-312-xxx-006
CL-450-VTC	RR00-312-xxx-003
CL-452-VTC	RR00-312-xxx-003
CL-453-VTC	RR00-312-xxx-003
CL-500-PTC	RR00-312-xxx-015
CL-50-SPC	RR00-250-xxx-006
CL-51-SPC	RR00-250-xxx-006
CL-51-TC	RR00-250-xxx-004
CL-53-TC	RR00-250-xxx-004
CL-550-AHTC	RR00-375-xxx-005
CL-550-HTC	RR00-375-xxx-010
CL-550-VTC	RR00-375-xxx-007
CL-552-VTC	RR00-375-xxx-007
CL-600-HTC	RR00-375-xxx-014
CL-600-PPC	RR00-250-xxx-006
CL-600-VTC	RR00-312-xxx-010
CL-650-ATC	RR00-375-xxx-007
CL-650-HTC	RR00-375-xxx-014
CL-650-VTC	RR00-375-xxx-007
CL-652-VTC	RR00-375-xxx-007
CL-750-VTC	RR00-375-xxx-007
CL-850-VTC	RR00-375-xxx-007

for De-Sta-Co	Use this riser
201	RR00-312-xxx-011
202	RR00-312-xxx-015
205	RR00-250-xxx-004
206	RR00-250-xxx-004
207	RR00-312-xxx-003
210	RR00-375-xxx-007
213	RR00-250-xxx-005
215	RR00-312-xxx-016
217	RR00-312-xxx-018
219	RR00-312-xxx-004
220	RR00-312-xxx-010
225	RR00-312-xxx-006
227	RR00-312-xxx-008
229	RR00-375-xxx-001
235	RR00-375-xxx-010
237	RR00-375-xxx-011
240	RR00-375-xxx-013
245	RR00-375-xxx-014
247	RR00-375-xxx-007
305	RR00-250-xxx-004
307	RR00-312-xxx-005
309	RR00-375-xxx-008
516	RR00-312-xxx-007
518	RR00-312-xxx-006
601	RR00-250-xxx-006
603	RR00-312-xxx-013
605	RR00-312-xxx-023
608	RR00-375-xxx-010
610	RR00-375-xxx-010
615	RR00-312-xxx-023
620	RR00-375-xxx-010
802	RR00-312-xxx-015
803	RR00-312-xxx-013
807	RR00-312-xxx-003
810	RR00-375-xxx-007
812	RR00-312-xxx-011
816	RR00-250-xxx-006
6001	RR00-250-xxx-003

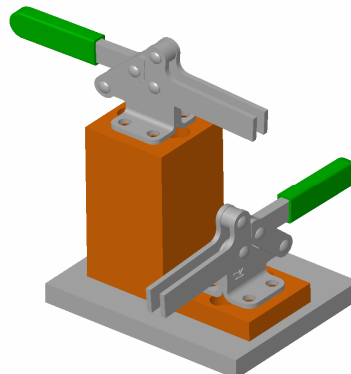
for REID	Use this riser
TC-201	RR00-312-xxx-011
TC-202	RR00-312-xxx-015
TC-205	RR00-250-xxx-004
TC-206	RR00-250-xxx-004
TC-207	RR00-312-xxx-003
TC-210	RR00-375-xxx-007
TC-213	RR00-250-xxx-005
TC-215	RR00-312-xxx-016
TC-217	RR00-312-xxx-018
TC-219	RR00-312-xxx-004
TC-225	RR00-312-xxx-006
TC-227	RR00-312-xxx-008
TC-229	RR00-375-xxx-001
TC-247	RR00-375-xxx-007
TC-305	RR00-250-xxx-004
TC-518	RR00-312-xxx-006
TC-601	RR00-250-xxx-006
TC-603	RR00-312-xxx-013
TC-6001	RR00-250-xxx-003

for TE-CO	Use this riser
34010	RR00-312-xxx-015
34012	RR00-312-xxx-015
34020	RR00-312-xxx-003
34022	RR00-312-xxx-003
34023	RR00-312-xxx-003
34025	RR00-312-xxx-003
34030	RR00-375-xxx-007
34035	RR00-375-xxx-007
34040	RR00-375-xxx-007
34041	RR00-375-xxx-007
34069	RR00-250-xxx-004
34081	RR00-312-xxx-020
34087	RR00-375-xxx-006
34101	RR00-250-xxx-006
34105	RR00-250-xxx-006
34110	RR00-312-xxx-009
34120	RR00-312-xxx-006
34130	RR00-375-xxx-015
34305	RR00-250-xxx-006
34310	RR00-312-xxx-023
34320	RR00-375-xxx-010
34325	RR00-375-xxx-010
34340	RR00-312-xxx-012
34350	RR00-375-xxx-010
34360	RR00-375-xxx-012

for All American	Use this riser
80-010	RR00-250-xxx-004
80-012	RR00-250-xxx-004
80-020	RR00-312-xxx-016
80-030	RR00-312-xxx-006
80-040	RR00-375-xxx-010
80-100	RR00-312-xxx-011
80-102	RR00-312-xxx-011
80-105	RR00-250-xxx-004
80-110	RR00-312-xxx-015
80-112	RR00-312-xxx-015
80-121	RR00-312-xxx-003
80-123	RR00-312-xxx-003
80-125	RR00-312-xxx-003
80-127	RR00-312-xxx-003
80-132	RR00-375-xxx-007
80-133	RR00-375-xxx-007
80-140	RR00-375-xxx-007
80-141	RR00-375-xxx-007
80-202	RR00-250-xxx-006
80-210	RR00-312-xxx-021
80-220	RR00-375-xxx-010
80-230	RR00-312-xxx-023
80-240	RR00-375-xxx-010

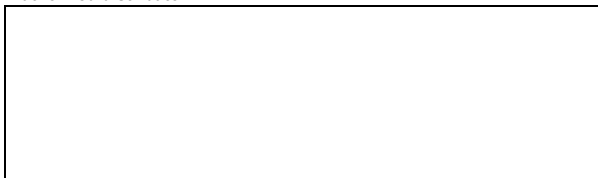
for Jergens	Use this riser
70210	RR00-250-xxx-006
70230	RR00-250-xxx-006
70240	RR00-312-xxx-019
70250	RR00-312-xxx-006
70260	RR00-250-xxx-005
70262	RR00-312-xxx-017
70264	RR00-375-xxx-016
70270	RR00-375-xxx-001
70280	RR00-250-xxx-001
70310	RR00-312-xxx-011
70320	RR00-312-xxx-011
70330	RR00-312-xxx-015
70340	RR00-312-xxx-015
70342	RR00-312-xxx-010
70350	RR00-312-xxx-003
70360	RR00-312-xxx-003
70365	RR00-312-xxx-003
70380	RR00-312-xxx-003
70390	RR00-312-xxx-003
70395	RR00-312-xxx-003
70420	RR00-375-xxx-007
70430	RR00-375-xxx-007
70440	RR00-375-xxx-007
70450	RR00-375-xxx-007
70460	RR00-375-xxx-007
70470	RR00-375-xxx-007
70810	RR00-312-xxx-012
70818	RR00-250-xxx-003
70820	RR00-312-xxx-023
70830	RR00-375-xxx-010
70840	RR00-375-xxx-010
70850	RR00-375-xxx-012
72160	RR00-312-xxx-022
72161	RR00-312-xxx-003
72162	RR00-375-xxx-006

See reverse side for riser mounting dimensions



Height desired	replace "xxx" with
0.500"	500
1.000"	1000
1.500"	1500
2.000"	2000
2.500"	2500
3.000"	3000
3.500"	3500
4.000"	4000

Authorized distributor



Voice: (262) 542-8891

www.rentapen.com

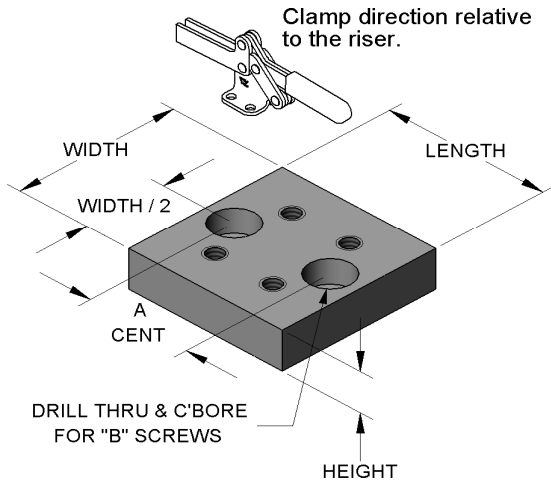
Fax: (262) 542-8892



RENTAPEN INC.

RAPid Tooling Components (RTC)

Clamp Risers



RTC Number	A	B	Width	Length	Tap
RR00-250-xxx-001	1.000	1/4	1.500	1.500	#10-24
RR00-250-xxx-002	1.000	1/4	1.500	1.500	#10-24
RR00-250-xxx-003	1.500	1/4	2.000	2.000	#10-24
RR00-250-xxx-004	1.000	1/4	1.500	1.500	#8-32
RR00-250-xxx-005	1.000	1/4	1.500	1.500	#8-32
RR00-250-xxx-006	1.000	1/4	1.500	1.500	#8-32
RR00-312-xxx-001	1.375	5/16	2.000	2.000	1/4-20
RR00-312-xxx-002	0.875	5/16	1.500	1.500	1/4-20
RR00-312-xxx-003	1.375	5/16	2.000	2.000	1/4-20
RR00-312-xxx-004	1.875	5/16	2.500	2.500	1/4-20
RR00-312-xxx-005	1.375	5/16	2.000	2.000	1/4-20
RR00-312-xxx-006	0.875	5/16	1.500	1.500	1/4-20
RR00-312-xxx-007	1.375	5/16	2.000	2.000	1/4-20
RR00-312-xxx-008	1.375	5/16	2.000	2.000	1/4-20
RR00-312-xxx-009	0.875	5/16	1.500	1.500	1/4-20
RR00-312-xxx-010	1.375	5/16	2.000	2.000	1/4-20
RR00-312-xxx-011	0.875	5/16	1.500	1.500	#8-32
RR00-312-xxx-012	1.875	5/16	2.500	2.500	1/4-20
RR00-312-xxx-013	1.375	5/16	2.000	2.000	1/4-20
RR00-312-xxx-014	0.875	5/16	1.500	1.500	#10-24
RR00-312-xxx-015	0.875	5/16	1.500	1.500	#10-24
RR00-312-xxx-016	0.875	5/16	1.500	1.500	#10-24
RR00-312-xxx-017	0.875	5/16	1.500	1.500	#10-24
RR00-312-xxx-018	1.375	5/16	2.000	2.000	#10-24
RR00-312-xxx-019	0.875	5/16	1.500	1.500	#10-24
RR00-312-xxx-020	0.875	5/16	1.500	1.500	#8-32
RR00-312-xxx-021	1.875	5/16	2.500	2.500	#10-24
RR00-312-xxx-022	0.875	5/16	1.500	1.500	#6-32
RR00-312-xxx-023	2.125	5/16	2.750	2.750	#10-24
RR00-375-xxx-001	2.000	3/8	2.750	2.750	5/16-18
RR00-375-xxx-002	2.000	3/8	2.750	2.750	5/16-18
RR00-375-xxx-003	1.750	3/8	2.500	2.500	#10-24
RR00-375-xxx-004	1.750	3/8	2.500	2.500	5/16-18
RR00-375-xxx-005	1.750	3/8	2.500	2.500	5/16-18
RR00-375-xxx-006	1.750	3/8	2.500	2.500	5/16-18
RR00-375-xxx-007	2.000	3/8	2.750	2.750	5/16-18
RR00-375-xxx-008	2.000	3/8	2.750	2.750	5/16-18
RR00-375-xxx-009	1.750	3/8	2.500	2.500	5/16-18
RR00-375-xxx-010	1.750	3/8	2.500	2.500	5/16-18
RR00-375-xxx-011	1.750	3/8	2.500	2.500	5/16-18
RR00-375-xxx-012	2.000	3/8	2.750	2.750	5/16-18
RR00-375-xxx-013	2.000	3/8	2.750	2.750	5/16-18
RR00-375-xxx-014	2.000	3/8	2.750	2.750	5/16-18
RR00-375-xxx-015	2.000	3/8	2.750	2.750	5/16-18
RR00-375-xxx-016	1.750	3/8	2.500	2.500	#10-24

Height desired	replace "xxx" with
0.500"	500
1.000"	1000
1.500"	1500
2.000"	2000
2.500"	2500
3.000"	3000
3.500"	3500
4.000"	4000

Part number examples:

- RR00-312-3000-003 3" tall riser for a De-Sta-Co 207 clamp
- RR00-250-1500-006 1.5" tall riser for a Carr Lane CL-51-SPC clamp

Rentapen's **RAPid Tooling Components (RTC)** are the NEW standard in fixture design. Use RTC Clamp Risers, Blocks, Plates, and Shims in all your designs for significant savings in cost and time. 2D drawings and 3D models can be created and downloaded from 3DContentCentral. Visit www.rentapen.com for a link to this CAD catalog.